











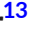










REVIEW ARTICLE

The impact of type 2 immunity and allergic diseases in atherosclerosis

Nieves Fernández-Gallego^{1,2}  | Raquel Castillo-González^{1,2,3}  | Nerea Méndez-Barbero^{4,5}  |
 Celia López-Sanz²  | David Obeso^{6,7}  | Alma Villaseñor^{6,7}  | María M. Escribese⁶  |
 Beatriz López-Melgar⁸  | Jorge Salamanca⁸  | Amparo Benedicto-Buendía⁸ |
 Luis Jesús Jiménez-Borreguero^{5,8}  | Borja Ibañez^{5,9,10}  | Joaquín Sastre^{11,12}  |
 María Teresa Belver¹³  | Francisco Vega¹³  | Carlos Blanco¹³  | Domingo Barber⁶  |
 Francisco Sánchez-Madrid^{1,2,5}  | Hortensia de la Fuente^{2,5}  | Pilar Martín^{1,5}  |
 Vanesa Esteban^{11,14}  | Rodrigo Jiménez-Saiz^{2,15,16,17} 

¹Vascular Pathophysiology Area, Centro Nacional de Investigaciones Cardiovasculares (CNIC), Madrid, Spain

²Department of Immunology, Instituto de Investigación Sanitaria Hospital Universitario de La Princesa (IIS-Princesa), Universidad Autónoma de Madrid (UAM), Madrid, Spain

³Department of Pathology, Hospital 12 de Octubre, Madrid, Spain

⁴Vascular Research Laboratory, Instituto de Investigación Sanitaria Fundación Jiménez Díaz (IIS-FJD), Madrid, Spain

⁵CIBER de Enfermedades Cardiovasculares (CIBERCV), Instituto de Salud Carlos III, Madrid, Spain

⁶Department of Basic Medical Sciences, Faculty of Medicine, Institute of Applied Molecular Medicine Nemesio Díez (IMMA), Universidad San Pablo-CEU, CEU Universities, Madrid, Spain

⁷Department of Chemistry and Biochemistry, Faculty of Pharmacy, Centre for Metabolomics and Bioanalysis (CEMBIO), Universidad San Pablo-CEU, CEU Universities, Madrid, Spain

⁸Department of Cardiology, Instituto de Investigación Sanitaria Hospital Universitario de La Princesa (IIS-Princesa), Madrid, Spain

⁹Myocardial Pathophysiology Area, Centro Nacional de Investigaciones Cardiovasculares (CNIC), Madrid, Spain

¹⁰Department of Cardiology, Instituto de Investigación Sanitaria Fundación Jiménez Díaz (IIS-FJD), Madrid, Spain

¹¹Department of Allergy and Immunology, Instituto de Investigación Sanitaria Fundación Jiménez Díaz (IIS-FJD), Universidad Autónoma de Madrid (UAM), Madrid, Spain

¹²CIBER de Enfermedades Respiratorias (CIBERES), Instituto de Salud Carlos III, Madrid, Spain

¹³Department of Allergy, Instituto de Investigación Sanitaria Hospital Universitario de La Princesa (IIS-Princesa), Madrid, Spain

¹⁴Faculty of Medicine and Biomedicine, Universidad Alfonso X El Sabio, Madrid, Spain

¹⁵Department of Immunology and Oncology, Centro Nacional de Biotecnología (CNB)-CSIC, Madrid, Spain

¹⁶Faculty of Experimental Sciences, Universidad Francisco de Vitoria (UFV), Madrid, Spain

¹⁷Department of Medicine, McMaster Immunology Research Centre (MIRC), McMaster University, Hamilton, Ontario, Canada

Abbreviations: AD, atopic dermatitis; AH, acetylhydrolase; Apo, apolipoprotein; AR, allergic rhinitis; ARMY, Atherosclerosis Risk Factors in Male Youngsters study; Blimp-1, B lymphocyte-induced maturation protein-1; C, complement component; CCL, C-C motif chemokine ligand; CRTH2, prostaglandin D2 receptor 2; CVD, cardiovascular disease; CysLT, cysteinyl leukotrienes; ECP, eosinophil cationic protein; F, coagulation factor; FcγR, Fcγ receptors; FcεRI, Fcε receptor 1; HFD, high cholesterol/fat diet; HPGDS, hematopoietic prostaglandin D synthase; HR, hazard ratio; ILC2, innate-like lymphoid cells type 2; LDLr, low-density lipoprotein receptor; MC, mast cell; MI, myocardial infarction; OR, odds ratio; OVA, ovalbumin; oxLDL, oxidized LDL; RR, risk ratio; SCF, stem cell factor; SMC, smooth muscle cell; Th, T-helper cell; T-reg, CD4 T-regulatory cell; TSLP, thymic stromal lymphopoietin; VWF, von Willebrand factor; α-gal, galactose-α-1,3-galactose.

Nieves Fernández-Gallego and Raquel Castillo-González contributed equally.

© 2022 European Academy of Allergy and Clinical Immunology and John Wiley & Sons Ltd.

Correspondence

Rodrigo Jiménez-Saiz, Department of Immunology, Instituto de Investigación Sanitaria Hospital Universitario de La Princesa (IIS-Princesa), C/ Diego de León 62, 28006 Madrid, Spain.
Email: rodrigo.jimenez@ufv.es

Funding information

Severo Ochoa Center of Excellence, Grant/Award Number: CEX2020-001041-S; Pro CNIC Foundation; Ministerio de Ciencia e Innovación; Ministry of Science and Innovation, Grant/Award Number: PID2019-110369RB-I00; European Commission, Grant/Award Number: ERC-CoG 819775 and H2020-HEALTH 945118; Spanish Ministry of Universities; Ayudas Margarita Salas para la Formación de Jóvenes Doctores—Universidad Autónoma de Madrid, Grant/Award Number: CA1/RSUE/2021-00577; Formación de Profesorado Universitario, Grant/Award Number: FPU16/03953; Sociedad Española de Alergología e Inmunología Clínica (SEAIC), Grant/Award Number: BECA20A9; New Frontiers in Research Fund, Grant/Award Number: NFRFE-2019-00083; The Nutricia Research Foundation, Grant/Award Number: NRF-2021-13; Instituto de Salud Carlos III, Grant/Award Number: PI21/00158, PI21/01126, CP20/00043, PI18/01467, PI19/00044, RD16/0006/0015 and RD21/0002/0008; Severo Ochoa Program, Grant/Award Number: AEI/SEV-2017-0712

Abstract

Allergic diseases are allergen-induced immunological disorders characterized by the development of type 2 immunity and IgE responses. The prevalence of allergic diseases has been on the rise alike cardiovascular disease (CVD), which affects arteries of different organs such as the heart, the kidney and the brain. The underlying cause of CVD is often atherosclerosis, a disease distinguished by endothelial dysfunction, fibrofatty material accumulation in the intima of the artery wall, smooth muscle cell proliferation, and Th1 inflammation. The opposed T-cell identity of allergy and atherosclerosis implies an atheroprotective role for Th2 cells by counteracting Th1 responses. Yet, the clinical association between allergic disease and CVD argues against it. Within, we review different phases of allergic pathology, basic immunological mechanisms of atherosclerosis and the clinical association between allergic diseases (particularly asthma, atopic dermatitis, allergic rhinitis and food allergy) and CVD. Then, we discuss putative atherogenic mechanisms of type 2 immunity and allergic inflammation including acute allergic reactions (IgE, IgG1, mast cells, macrophages and allergic mediators such as vasoactive components, growth factors and those derived from the complement, contact and coagulation systems) and late phase inflammation (Th2 cells, eosinophils, type 2 innate-like lymphoid cells, alarmins, IL-4, IL-5, IL-9, IL-13 and IL-17).

KEYWORDS

allergic inflammation, atherogenesis, atherosclerosis, cardiovascular disease, type 2 immunity

1 | ALLERGIC AND CARDIOVASCULAR DISEASE (CVD): A GROWING ISSUE

Allergic diseases are a heterogeneous group of allergen-induced immunological disorders including allergy to foods, drugs and insects, allergic asthma, allergic rhinitis (AR), atopic dermatitis (AD) and eosinophilic esophagitis. The clinical manifestations of allergic reactions range in severity from mild symptoms to life-threatening anaphylaxis. Around 1.5 billion people have an allergic disease and their overall prevalence has been increasing in the last few decades.^{1,2} Allergic diseases are often chronic and there is a need for effective, curative treatments. Furthermore, there is increasing awareness of the negative impact on the quality of life of allergic patients and their relatives, notably in asthma³ and food allergy.⁴ In addition to being a health and social concern, allergic diseases entail a tremendous economic burden.^{5,6}

The rise in allergy is paralleled by the increasing CVD prevalence, which affects arteries of different organs such as the heart, the kidney and the brain. CVD can remain asymptomatic for decades and manifest as a stroke or heart attack, causing sudden death in the

most severe cases.⁷ Approximately 523 million people suffer from CVD, the leading cause of mortality worldwide with 18.6 million deaths per year (>31% of total deaths).⁸ Furthermore, the prevalence of risk factors of CVD is increasing in younger adults.⁹ As this younger population ages, there is a growing CVD burden at the health, social and economic level.¹⁰ Noteworthy, atherosclerosis often underlies CVD, particularly in ischemic heart disease and stroke, which are major causes of morbidity and mortality globally accounting for 50% and 35% of CVD deaths, respectively.^{11,12}

2 | ATHEROSCLEROSIS

Atherosclerosis is a chronic disease characterized by endothelial dysfunction, accumulation of fibrofatty material in the intima of the artery wall, smooth muscle cell (SMC) proliferation, and local and systemic inflammation (Figure 1).^{13,14} The atherosclerotic plaque can become more fibrous and accumulate calcium with time. When advanced plaques progress, they can remodel the arterial wall invading the arterial lumen, obstructing blood flow and provoking myocardial

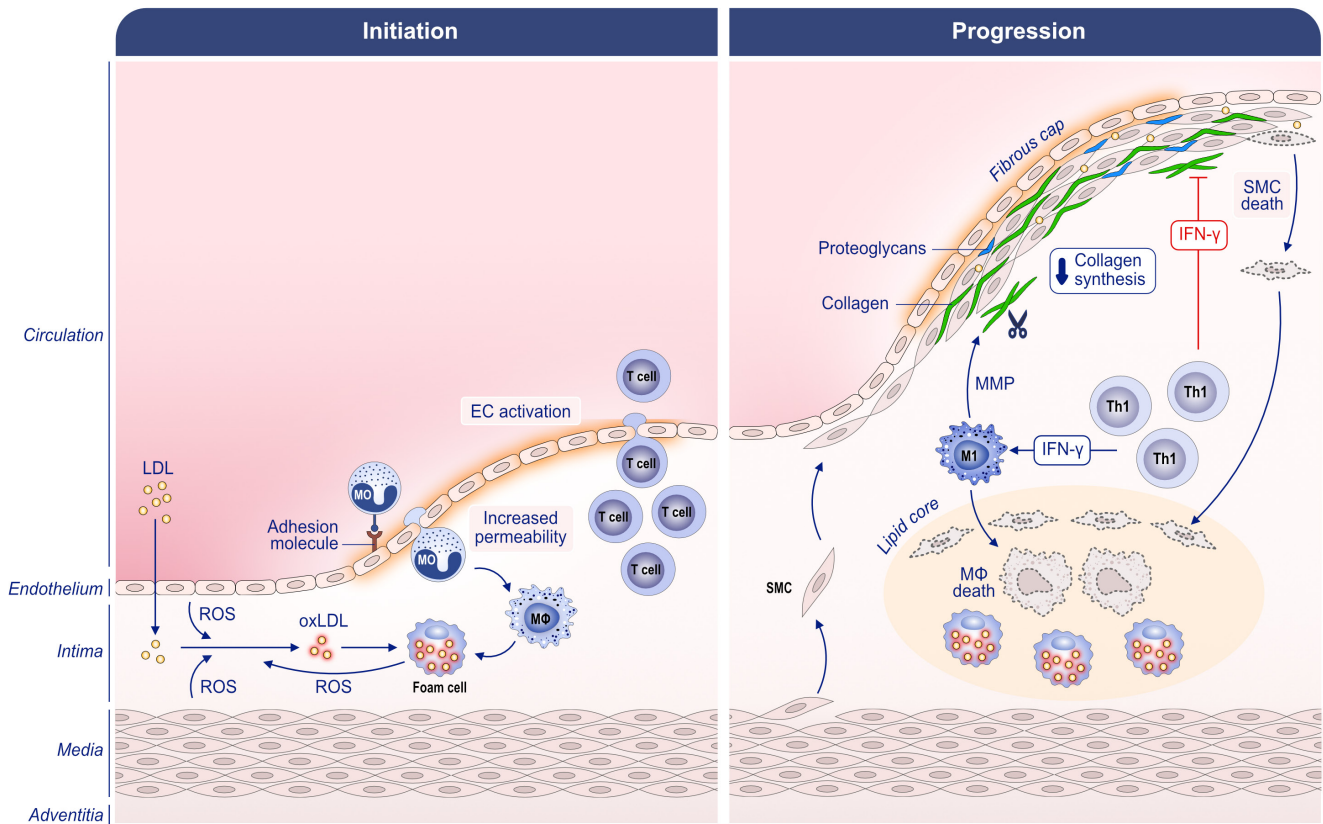


FIGURE 1 Initiation and progression of an atherosclerotic lesion. Left panel: subendothelial accumulation of LDL initiates an atherosclerotic lesion. Reactive oxygen species (ROS) production in the intima layer causes LDL oxidation (oxLDL), inducing the activation of endothelial cells (EC). Increased permeability and the upregulation of adhesion molecules of activated endothelial cells facilitate recruitment of leukocytes such as T cells and monocytes (MO). Lesional monocytes differentiate into macrophages (MΦ) that internalize and retain oxLDL. Activated macrophages contribute to ROS generation and, thus, LDL modification, which leads to cholesterol-rich macrophage foam cells formation. Right panel: when an atherosclerotic lesion progresses, foam cell accumulation contributes to lipid storage and plaque growth. Smooth muscle cells (SMC) migrate from the media layer to the subendothelial space in response to proinflammatory mediators. SMC produce extracellular matrix molecules (collagen, proteoglycans, etc.) promoting intima layer thickening and developing a fibrous cap that confers plaque stability. In contrast, IFN- γ and other inflammatory mediators produced by Th1 cells inhibit SMC proliferation and collagen expression; they also induce matrix metalloproteinases (MMPs) production by M1 macrophages, which weakens the fibrous cap and increases plaque vulnerability. Cell death of foam cells and SMC overloaded with cholesterol result in extracellular cholesterol deposition and formation of a lipid necrotic core

ischemia. Acute myocardial events also occur due to an impaired blood flow caused by intra-arterial thrombosis induced by coronary plaques ulceration.^{15,16} This acute lack of irrigation can affect myocardial perfusion itself resulting eventually in acute myocardial infarction (MI), or as a chronic condition causing symptoms related to stable coronary artery disease in a chronic coronary syndrome.¹⁷ In addition, a lack of blood supply to the cerebral arteries triggers ischemic strokes. In the case of ischemia in peripheral arteries, intermittent claudication, ulceration and gangrene may occur.¹⁸

Low-density lipoproteins (LDLs) are involved in the initiation and progression of atherosclerosis. Due to interactions with extracellular structures, such as arterial wall proteoglycans, LDLs are retained in the subendothelial space, where they can oxidize (oxLDL) or suffer other modifications.¹⁹ This process appears to be eased by inflammatory insults that increase endothelial permeability.¹⁰ Moreover, lesional macrophages internalize oxLDL yielding foam cells, which contribute to lipid storage and plaque growth.²⁰ In addition, oxLDL

promotes the release of cytokines by macrophages, which favours cell recruitment (monocytes, T cells, eosinophils, mast cells [MCs], etc.). Lipoprotein lipase and phospholipase-A2 secreted by macrophages induce LDL-binding proteoglycan formation, enhancing atherosclerosis progression. Furthermore, through platelet-derived growth factor secretion, macrophages promote SMC migration from the tunica media to the intima.²¹ IFN- γ -producing-Th1 cells also enter the intima and respond to oxLDL in an antigen-specific manner regulating some functions of innate cells, the endothelium and SMCs. For example, IFN- γ promotes M1 macrophage polarization and metalloproteinase production, and decreases collagen synthesis by SMCs, which contribute to plaque vulnerability.¹⁰ T-regulatory cells (T-reg) recognize modified apolipoprotein (Apo) B²² epitopes and respond to oxLDL via CD69 inducing the expression of anti-inflammatory factors.²³ Regarding Th2 (the hallmark allergic cells) and Th17 cells (present in some allergic phenotypes), there are conflicting data that are discussed in Section 4.

3 | ALLERGIC PATHOLOGY

Allergic sensitization, understood as the development of type 2 immunity and IgE responses against allergens, usually occurs early in life and can become chronic. It is the outcome of an interplay between the allergen and the dendritic cell influenced by the allergen innate immunostimulatory properties, individual genetic predisposition to atopy, and the level of tissue damage.²⁴ Indeed, a compromised epithelial barrier is the current paradigm on the global rise in allergy.²⁵ Once someone becomes allergic there are, by and large, three clinical scenarios determined by allergen exposure (Figure 2).

The first scenario refers to allergic individuals that are unexposed to the allergen. While allergen avoidance protects them from undergoing allergic reactions, strict avoidance is an unsurmountable challenge when dealing with ubiquitous allergens such as those from pollen, dust mites, pets or certain foods.^{26,27}

Allergen exposure triggers acute allergic reactions. These are largely mediated by the so-called “classical pathway” dependent on IgE and Fcε receptor I (FcεRI) signaling in MCs and basophils.²⁸ In addition,

alternative pathways of acute reactions involve the activation of monocytes/macrophages or neutrophils via IgG and Fcγ receptors (FcγR).^{29,30} Both pathways converge on the rapid release of proinflammatory and vasoactive mediators, which can be preformed (histamine, tryptase, chymase, etc.), or synthesized de novo (prostaglandins, leukotrienes, PAF, etc.).³¹ Whether via IgE and/or IgG1 signalling, the released allergic mediators disrupt endothelial barrier function³²⁻³⁴ and impact the cardiovascular system by mechanisms reviewed recently.^{31,35}

Late phase allergic reactions occur within hours, or days, following allergen encounter. These reactions involve inflammatory mediators released in the early-phase reaction by MCs and basophils, and allergen-specific Th2 lymphocytes.³⁶ Activated memory Th2 cells proliferate and produce cytokines (IL-4, IL-5, IL-9, IL-13, and IL-31). Th2 cells act synergistically with type 2 innate-like lymphoid cells (ILC2) activated during the acute phase. They recruit effector cells such as eosinophils, basophils, as well as other lymphocytes, to the site of allergen exposure.³⁷⁻³⁹ The Th2-IL-5-eosinophil axis enables or exacerbates other pathways that positively feedback into late phase inflammation. As such, IL-4, IL-5, and IL-13 drive Th2 cells towards

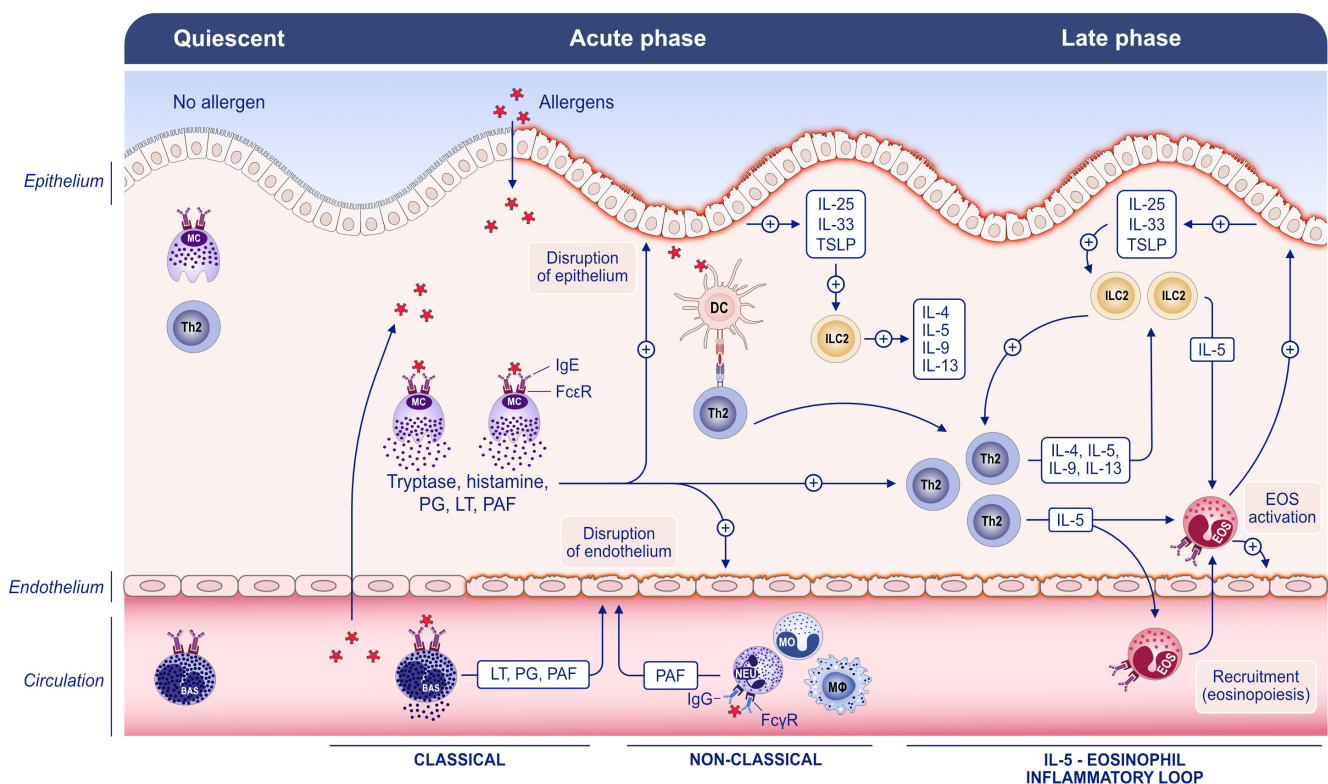


FIGURE 2 Overview of clinical scenarios in allergic pathology determined by allergen exposure. In the absence of allergen re-exposure, the cellular machinery that mediates allergic reactions remains quiescent (left panel). Upon allergen re-encounter, whether systemically and/or through the epithelium, two reactions take place in a time-dependent manner. There is an immediate reaction that develops within seconds, or minutes, and that is dependent on IgE/IgG; the activation of the classical pathway (IgE) leads to the degranulation of mast cells (MCs) and basophils (BAS) while the alternative (IgG) can operate on monocytes (MO), macrophages (MΦ) and neutrophils (NEU). Both pathways concur in the release of inflammatory mediators such as PAF, histamine, prostaglandins (PGs), leukotrienes (LTs), etc., which damage and increase the permeability of the epithelium/vasculature leading to clinical manifestations (middle panel) and contributing to the late phase reaction. The latter occurs within hours, or days, following allergen exposure via antigen-presenting cells such as dendritic cells (DC); it is orchestrated by Th2 cells and related cytokines (IL-4, IL-5, IL-9, IL-13). The Th2-IL-5 axis induces eosinophil (EOS) recruitment to the sites of allergen exposure. Eosinophils contribute to the inflammatory ambient that can be exacerbated with the presence of type 2 innate lymphoid cells (ILC2) and epithelial-cell derived alarmins (IL-33, TSLP, IL-25) (right panel)

a specialized Th2A phenotype (CRTH2⁺CD49d⁺CD161⁺) associated with persistent allergy and high *IL5*, *IL9*, and *HPGDS* expression.^{40,41} Moreover, degranulating eosinophils, together with early-phase mediators, cause the release of epithelial-derived alarmins (IL-33, TSLP, IL-25, etc.), promote ILC2 differentiation, and foster a pernicious cycle of (chronic) inflammation.^{37,42,43} Ultimately, allergic inflammation impairs tissue functionality, rather than restoring homeostasis.⁴⁴

4 | THE CLINICAL ASSOCIATION BETWEEN ALLERGY AND ATHEROSCLEROSIS

The association of serum IgE levels and CVD has been assessed with inconclusive results.⁴⁵ This may insinuate that IgE plays different roles under homeostatic vs inflammatory conditions. When focusing specifically on IgE in atopy or allergy, several observational studies have analyzed the association between allergic disease and CVD risk (Table 1).

A prospective study with two matched cohorts of asthmatic and non-asthmatic patients (>200,000 patients per cohort) followed from 1996 to 2008 in the USA and showed a significant CVD risk increase in asthmatic patients as compared to controls.⁴⁶ Although the asthma patient cohort was not stratified (allergic vs non-allergic asthma), there was a significant effect of allergic disease, without asthma, on the risk of coronary heart disease (hazard ratio, [HR] 1.31), cerebrovascular disease (HR 1.22), and heart failure (HR 1.11).⁴⁶

Regarding AD, a meta-analysis of 17 population-based studies reported that increasing severity was associated with higher risk of major cardiovascular outcomes (angina, MI, coronary revascularization, heart failure, cardiac arrhythmias, stroke, and cardiovascular death); AD was also associated with increased risk of MI (risk ratio [RR] 1.12), stroke (RR 1.10), ischemic stroke (RR 1.17), angina (RR 1.18), and heart failure (RR 1.26).⁴⁷ Similarly, a recent meta-analysis of 37 studies from Europe, Asia and North America, showed significantly higher overall odds ratio (OR) of CVD (1.08) in AD patients.⁴⁸ In addition, a Swedish nationwide, register-based, case-control study analyzed data from >100,000 AD patients and >1,000,000 controls from 1968 to 2016.⁴⁹ This study found that AD was associated with angina pectoris (OR 1.13) and MI (OR 1.07), and severe AD with ischaemic stroke (OR 1.19).⁴⁹ Furthermore, hypertension and hyperlipidemia -known CVD risk factors- were more prevalent in AD patients, as compared to controls.⁴⁹ It is pertinent to remark that ~20% of AD patients do not show elevated serum IgE levels or allergen-specific sensitization. This AD phenotype, known as intrinsic, usually starts in adulthood. Intriguingly, both intrinsic and extrinsic AD patients show a Th2-biased gene expression in lesional skin, although the former seems to present with a more robust Th17 and Th22 response.⁵⁰ Hence, evaluating CVD risk of these two AD phenotypes would be informative.

The impact of AR on CVD risk is controversial. For instance, one study analyzed data of 110,207 AR patients in a matched cohort from 1999 to 2012 in South Carolina (USA).⁵¹ It showed a lower risk for

MI (HR 0.63), coronary heart disease (HR 0.81) and CVD (HR 0.67) in AR patients.⁵¹ In contrast, a large-scale cohort study of ~9.5 million individuals followed from 2010 to 2018 through the Korean National Health Insurance Service⁵² found an increased MI risk in AR patients (HR 1.11). This study also reported an increased MI risk in AD (HR 1.14) and asthmatic patients (not stratified based on asthma type; HR 1.37). Interestingly, the combined risk of MI in patients with AD and asthma (HR, 1.81) was higher than in patients with AD, asthma and AR (HR, 1.71).⁵² The allergic group presented more CVD risk factors such as hypertension or dyslipidemia than controls, although it was partly attributed to the significant differences in age. Nevertheless, a recent cross-sectional study in Egypt with 150 AR patients followed for 2 months reported dyslipidemia in 56% of them.⁵³ Moreover, serum levels of IgE and IL-17A, as well as house-dust-mite-sensitization, were identified as independent risk factors that significantly increased dyslipidemia risk.⁵³ In agreement, a multicenter prospective study conducted in Italy in 160 adult AR patients and matched controls reported a significantly higher dyslipidemia risk in AR patients.⁵⁴

The relationship between food allergy and CVD has been less investigated. A study in the USA included 118 subjects that underwent cardiac catheterization and intravascular ultrasound to investigate galactose- α -1,3-galactose (α -gal)-specific IgE levels in atherosclerosis.⁵⁵ It reported that 26.3% of them had α -gal-specific-IgE and found a strong association between α -gal-specific-IgE and atheroma burden. Unstable plaques with more fibrofatty, necrotic and calcified content, and less fibrous, were associated with α -gal-specific IgE serum levels.⁵⁵ Interestingly, IgE-specific levels to common aeroallergens and to peanut, did not significantly correlate with atheroma burden and volume, nor with maximal stenosis.⁵⁵ Sensitization to α -gal is often attributed to tick bites. However, α -gal is present in non-primate mammals and can be found in many dietary sources and in carrageenan (E407).^{56,57} Therefore, the continuum environmental exposure to α -gal presumably sustains a level of chronic inflammation. The fact that α -gal is involved in delayed rather than acute reactions may favour recurrent exposures because these reactions are often misdiagnosed; not to mention that patients with a low degree of α -gal sensitization likely remain asymptomatic.⁵⁶

Altogether, different lines of evidence indicate that allergic diseases increase CVD risk, which is often driven by atherosclerosis. Some clinical studies, such as the Bruneck and the ARMY (Atherosclerosis Risk Factors in Male Youngsters study), have found a significant association between allergic diseases and subclinical atherosclerosis.⁵⁸ The Bruneck study, conducted in Italy in a cohort of 826 individuals (40–70 year olds) reported that allergic patients were at a higher risk of atherosclerosis development and progression (OR 3.9 for asthma [not stratified based on type], AR or both; OR 1.7 for IgE). Similarly, the ARMY study, performed in Austria in a cohort of 141 men (17–18 year olds) concluded that young allergic individuals were at a significantly increased risk for high intima media thickness (OR 3.0 for asthma [not stratified based on type], AR or both).⁵⁸ Yet, these findings are observational and usually lack of patient stratification according to allergic disease severity or phenotype. Scientific evidence demonstrating the causal relationship between

TABLE 1 Summary of observational studies regarding the association between allergic disease and CVD. The Table references are included as Data S1, supplementary references

Study	Study design	Patients	Follow up	Conclusions
Iribarren et al. (2012) ¹ Country: USA	Retrospective	407,190 AS patients and controls [$\eta = 66\%$]	9 years (1999–2008)	<ul style="list-style-type: none"> AS: \uparrow risk of CVD Allergic co-morbidities: \uparrow risk of CVD AS medication: \uparrow risk of CVD and all-cause mortality Allergic disease: \uparrow risk of coronary heart disease, cerebrovascular disease and heart failure
Asscott et al. (2018) ² Country: USA	Population-based meta-analysis	AD patients		<ul style="list-style-type: none"> AD: \uparrow risk of CVD. No evidence with stroke or ischemic stroke
Andersen et al. (2016) ³ Country: Denmark	Cohort	174,797 patients and controls [$\eta = 54\%$]	15 years (1997–2012)	<ul style="list-style-type: none"> Severe AD: \uparrow burden of comorbidities and detrimental lifestyle; \uparrow risk of CVD
Drucker et al. (2016) ⁴ Country: USA	Cross-sectional	78,702 patients and controls [$\eta = 100\%$]	20 years (1989–2009)	<ul style="list-style-type: none"> AD: \uparrow risk of stroke but no MI
Drucker et al. (2017) ⁵ Country: Canada	Cross-sectional	259,119 patients and controls [$\eta = 61.4\%$]	2009 onwards	<ul style="list-style-type: none"> AD: \downarrow risk of HT, MI and stroke
Egeberg et al. (2016) ⁶ Country: Denmark	Cross-sectional	111,812 AD and psoriasis patients, and controls [$\eta = 61.4\%$]	17 years (1995–2012)	<ul style="list-style-type: none"> AD: \uparrow risk factors and comorbidities for CVD Psoriasis risk > AD risk for CVD
Kwa et al. (2017) ⁷ Country: USA	Cross-sectional	72,651,487 inflammatory skin disease patients	10 years (2002–2012)	<ul style="list-style-type: none"> Skin diseases: \uparrow risk of CVD
Marshall et al. (2013) ⁸ Country: USA	Restricted cohort study, analyzed as case-control	8526 inflammatory skin disease patients and controls [$\eta = 67\%$]	3 years (2005–2007)	<ul style="list-style-type: none"> AD: no independent 1-year risk of CVD
Radtke et al. (2017) ⁹ Country: Germany	Cross-sectional	1,349,671 inflammatory skin disease patients	1 year (2009)	<ul style="list-style-type: none"> Psoriasis risk > AD risk for CVD
Riis et al. (2016) ¹⁰ Country: Denmark	Cohort	53,210 AD patients and controls [$\eta = 55\%$]	33 years (1977–2013)	<ul style="list-style-type: none"> AD: \uparrow risk of MI
Silverberg. (2015) ¹¹ Country: USA	Cross-sectional	66,652 AD patients and controls	2 years (2005–2006) 1 year (2010) 1 year (2012)	<ul style="list-style-type: none"> AD: \uparrow risk of CVD and stroke
Silverwood, Forbes, et al. (2018) ¹² Country: UK	Cohort	1,915,916 AD patients and controls [$\eta = 66\%$]	18 years (1998–2015)	<ul style="list-style-type: none"> AD: moderate \uparrow risk of non-fatal CVD
Standl et al. (2016) ¹³ Country: Germany	Cohort	AOKPLUS cohort 1,214,133 patients 1,180,678 patients KORAF4 cohort 2990 AD patients and controls [$\eta = 51.5\%$] GIN plus & LISAPlus 2286 AD patients and controls [$\eta = 51\%$]	10 years (2005–2014) 2 years (2012–2014) 7 years 15 years	<ul style="list-style-type: none"> No association between AD and CVD risk factors

TABLE 1 (Continued)

Study	Study design	Patients	Follow up	Conclusions
Su et al. (2014) ¹⁴ Country: Taiwan	Cohort	40,646 AD patients and controls [$\eta = 61.9\%$]	5 years (2005–2008)	<ul style="list-style-type: none"> AD: \uparrow risk of ischemic stroke
Sung et al. (2017) ¹⁵ Country: Taiwan	Cohort	75,515 AD patients and controls [$\eta = 54.2\%$]	11 years (2000–2010)	<ul style="list-style-type: none"> AD severity correlates with risk of ischemic stroke
Treudler et al. (2017) ¹⁶ Country: Germany	Cross-sectional	9481 AD patients and controls [$\eta = 57\%$]	4 years (2011–2014)	<ul style="list-style-type: none"> No correlation of AD with CVD
Tsai et al. (2016) ¹⁷ Country: Taiwan	Cohort	470,440 AD patients and controls [$\eta = 58.13\%$]	12 years (2000–2011)	<ul style="list-style-type: none"> Corticosteroid treatment in AD patients is a risk factor for stroke
Varbo et al. (2017) ¹⁸ Country: Denmark	Cohort	84,601 FLG-mut ⁺ patients and controls [$\eta = 56.3\%$]	13 years (2001–2014)	<ul style="list-style-type: none"> FLG-mut: \uparrow risk of ischemic stroke
Chester et al. (2021) ¹⁹ Country: Italy	Random-effect model meta-analysis	237,226,993 AD patients	30 years (1990–2020)	<ul style="list-style-type: none"> AD: \uparrow risk of CVD
Ivert et al. (2019) ²⁰ Country: Sweden	Case-control	1,127,267 AD patients and controls [$\eta = 66.1\%$]	48 years (1968–2016)	<ul style="list-style-type: none"> AD associates with CVD
Crans Yoon et al. (2016) ²¹ Country: USA	Retrospective population-based matched cohort	220,414 AR patients and controls [$\eta = 65.8\%$]	13 years (1999–2012)	<ul style="list-style-type: none"> AR: \downarrow risk of CVD and all-cause mortality IgE +: \downarrow risk of CVD
Rhee et al. (2020) ²³ Country: Korea	Prospective	9,548,939 patients with allergic diseases [$\eta = 45\%$]	8 years (2009–2018)	<ul style="list-style-type: none"> Allergic diseases (AS, AR and AD): \uparrow risk of CVD AD + AR: $\uparrow\uparrow$ risk of MI and all-cause mortality AR: \uparrow prevalence of DL
Sheha et al. (2021) ²⁴ Country: Egypt	Comparative cross-sectional	150 AR patients with DL and DL-free [$\eta = 41.3\%$]	2 months	
La Mantia et al. (2017) ²⁵ Country: Italy	Prospective	160 AR patients [$\eta = 47.5\%$]	7 months	<ul style="list-style-type: none"> AR: \uparrow correlation with DL
Wilson et al. (2018) ²⁶ Country: USA	Retrospective	118 catheterization patients [$\eta = 50\%$]		<ul style="list-style-type: none"> α-gal-IgE: \uparrow atheroma volume and unstable plaques
Knoflach et al. (2005) ²⁷ Country: Austria	Prospective population-based survey			<ul style="list-style-type: none"> AS and AR: \uparrow association with Ath
		Bruneck study 1872 Ath patients and controls [$\eta = 51\%$]	5 years (1990–1995)	
		ARMY 141 subjects with low vs. high intima media thickness [$\eta = 0\%$]	5 months	

Abbreviations: AD, atopic dermatitis; AR, allergic rhinitis; ARMY, Atherosclerosis Risk Factors in Male Youngsters; AS, asthma; Ath, atherosclerosis; CVD, cardiovascular disease; DL, dyslipidemia; FLG, filaggrin; HT, hypertension; MI, myocardial infarction; α -gal, galactose- α -1,3-galactose.

*FLG mutations cause AD, previously found to be associated with ischemic stroke.

allergic diseases and atherosclerosis is scarce. Indeed, intervention studies demonstrating that allergy treatment reduces atherosclerosis, or related events, are lacking, and the mechanisms by which allergic diseases promote atherosclerosis remain largely unexplored.

5 | PUTATIVE ATHEROSCLEROTIC MECHANISMS OF ALLERGIC DISEASE

Experimental CVD models have been useful to investigate atherosclerosis. ApoE^{-/-} and LDL receptor (LDLR)^{-/-} mice are genetically predisposed to develop atherosclerosis, particularly when fed a high cholesterol/fat diet (HFD; otherwise indicated in the text).⁵⁹⁻⁶¹ These

models have proven useful to investigate the relationship between allergy and CVD as they mimic the clinical association observed in humans.^{62,63} However, in most cases, they have been applied to investigate the contribution of canonical type 2 immunity players to CVD under homeostatic conditions. In other words, how basal IgE⁶⁴ or MCs,⁶⁵ without established allergy, influence atherosclerosis.

5.1 | Atherosclerotic potential of acute allergic reactions

The key effector molecules of immune-mediated, acute allergic reactions are IgE and IgG,²⁸ and both have been associated with

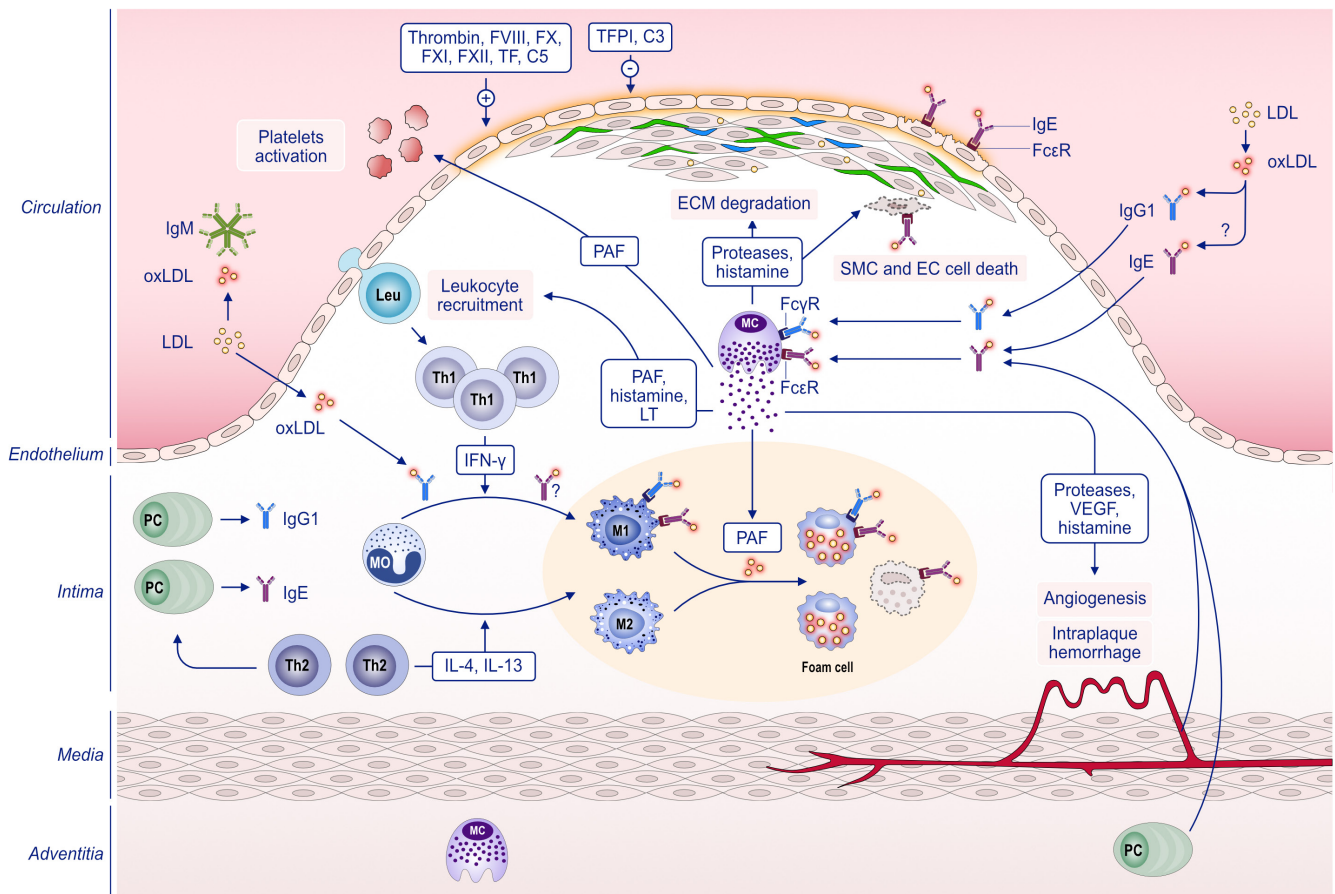


FIGURE 3 Potential atherosclerotic mechanisms of acute allergic reactions. Mast cells (MC) are found in lesions in a greater number than in healthy arterial intima, although they are much fewer than macrophages (MΦ). Activated MC release inflammatory mediators that contribute to atherosclerosis progression and plaque destabilization. PAF and histamine activate endothelial cells (EC) and increase adhesion molecules expression and vascular permeability, facilitating the entry of LDL, other mediators, or leukocytes (Leu). Furthermore, PAF enhances foam cell formation by oxidized LDL (oxLDL) uptake and thrombus by platelet activation. Proteases such as tryptase and chymase damage extracellular matrix (ECM), EC and smooth muscle cells (SMC), thus facilitating fibrous cap erosion and intraplaque hemorrhage. Along with the release of angiogenic growth factors such as VEGF, MC induce local microvessel growth. MC can be activated by antigen-IgE-FcεR, via oxLDL-IgG1-FcγR or other signals like C5a-C5aR. Plaque Ig can originate from B cells in adventitia or intima, circulating Ig that enters through the dysfunctional endothelium, or even microvessels in neovascularized areas of plaques, or intraplaque hemorrhages. IgE signalling in plaque macrophages favours M1 macrophage polarization and foam cell formation. IgE stimulation is also associated with SMC, EC and macrophage apoptosis. IgE-binding to atherosclerosis antigens like oxLDL remains unknown. Serum IgM and IgG1 form oxLDL immune complexes playing an atheroprotective role. Intraplaque oxLDL-specific IgG1 may also exhibit a protective neutralizing effect, although it may induce MC and macrophage activation via FcγR engagement. PC, plasma cell; LT, leukotriens; MO, monocyte; M2, M2 macrophage; F, factor; TFPI, tissue factor pathway inhibitor

atherosclerosis (Figure 3). IgE contributes to plaque progression through several mechanisms including M1 macrophage polarization, foam cell formation, and vascular cell apoptosis.^{64,66,67} In addition, anti-IgE has been postulated as an atheroprotective intervention in autoimmune diseases.^{68,69} On the other hand, the number of IgG subtypes and diverse functionality of Fcγ receptors (activating vs inhibitory) have made it challenging to ascertain its role, which is also influenced by its specificity toward atherosclerosis-derived-antigens.⁷⁰⁻⁷² As it pertains to IgG1, high serum concentrations have been observed in ApoE^{-/-} mice⁷³ and atherosclerotic mechanisms have been reported involving Fcγ receptors and macrophages.⁷⁴ Noteworthy, oxLDL-specific IgG has been detected in human plaques,⁷⁰ and different experimental strategies support the therapeutic role of oxLDL- (or atherosclerosis-derived-antigen)-specific IgG1 for plaque progression or stabilization.⁷⁵⁻⁷⁷ Therefore, an increased serum level of oxLDL-specific IgG1, while indicative of atherosclerosis, may be atheroprotective.

MCs play a pivotal role in acute allergic reactions and in atherosclerosis.⁷⁸⁻⁸⁰ Activated MCs contribute to plaque growth and instability including intraplaque hemorrhage, increased lipid uptake, leukocyte influx, endothelial and SMC apoptosis, and matrix degradation.⁸¹ Increased lesion size in the brachiocephalic artery and an enhanced incidence of intraplaque hemorrhage in carotid artery lesions has been observed in a dinitrophenyl-IgE-mediated anaphylaxis model in ApoE^{-/-} mice.⁸² Moreover, MC-deficiency was shown to inhibit plaque development in LDLr^{-/-} mice, which was attributed to decreased levels of IL-6, IFN-γ, cholesterol and triglycerides.^{65,83}

5.1.1 | Mediators of acute allergic reactions

Mediators released during acute allergic reactions contribute to atherosclerosis, notably via plaque destabilization as observed in some Kounis syndrome variants.⁸⁴ Serum tryptase, a common anaphylaxis biomarker, has been positively correlated with lesion size,⁸⁵ increased intraplaque hemorrhage⁸⁶ and cardiovascular events. Chymase has also been associated with plaque destabilization via matrix degradation with the consequent apoptosis of vascular SMCs and endothelial cells, and plaque erosion.^{82,87} In addition, chymase has been reported to reduce macrophage cholesterol efflux via proteolytic HDL inactivation.⁸⁸ In agreement, chymase inhibition reduced intraplaque hemorrhage in carotid artery atherosclerosis in ApoE^{-/-} mice⁸⁹ and impaired atherosclerosis in hamsters.⁹⁰

Growth factors and vasoactive agents are detrimental in atherosclerosis. For example, it has been reported that VEGF decreases vessel tone and destabilizes the endothelium⁹¹; GM-CSF accelerates plaque progression in LDLr^{-/-} mice by increasing macrophage apoptosis⁹²; and low stem cell factor (SCF) levels are associated with increased incidence of coronary events.⁹³ In addition, histamine contributes to plaque destabilization and intraplaque hemorrhage by enhancing vascular permeability and inflammation⁸¹; and histamine deficiency has been shown to decrease the expression of adhesion molecules and metalloproteinases.⁹⁴ However, studies addressed in

ApoE^{-/-} mice have demonstrated the antagonistic role of histamine receptors, which exert atherogenic (receptor 1) and atheroprotective (receptor 2) functions.⁹⁵

PAF participates in endothelial dysfunction, platelet reactivity, and foam macrophage differentiation.^{96,97} It induces the expression of adhesion molecules, which likely favour atherosclerosis through leukocyte recruitment and tissue extravasation.⁹⁸ In addition, during plaque growth and expansion, PAF and its receptor have been linked to macrophage activation by oxidative stress and oxLDL uptake.⁹⁹ The activity of PAF is regulated by PAF acetylhydrolase (PAF-AH),¹⁰⁰ whose reduction in circulation has been identified as a biomarker of severe anaphylaxis.¹⁰¹ PAF-AH circulates forming a complex with LDL and HDL,^{102,103} and prevents their oxidation.¹⁰⁴ Consequently, allergic reactions may impair the atheroprotective role of PAF-AH. Lastly, other arachidonic-acid-derived allergic mediators, especially cysteinyl leukotrienes (CysLT), have been shown to be determinant in MI, brain ischemia, aortic aneurysms and intimal hyperplasia.^{105,106} Indeed, CysLT participate in plaque progression and the use of CysLT receptor antagonists reduces CVD risk.^{107,108}

5.1.2 | Coagulation, contact and complement systems

The activation of the coagulation, contact and complement systems concurs in acute allergic reactions and atherosclerosis. The relationship between coagulation and atherosclerosis has been reported in different models and clinical studies, supporting the use of anticoagulants in atherothrombotic events.¹⁰⁹ The importance of thrombin, and consequently of coagulation in atherosclerosis, has been conclusively demonstrated using both ApoE^{-/-} mice and pharmacological tools.^{110,111} Other relevant components such as tissue factor pathway inhibitor,¹¹² coagulation factor (F) VIII,¹¹³ and activated FX¹¹⁴ have been implicated in murine plaque development. Furthermore, the genetic ablation of FXII decreased lesion formation by reducing the expression of pro-inflammatory cytokines in antigen-presenting cells.¹¹⁵ In addition, FXI genetic deficiency or pharmacological inhibition in ApoE^{-/-} and LDLr^{-/-} mice slowed down atherogenesis.^{116,117} Regarding kininogen, its genetic deficiency promotes aneurysm formation but not atherosclerosis.¹¹⁸

C3a, C4a, and C5a peptides, which derive from C3, C4 and C5 proteolysis, have been considered, along with IgG, to be the main non-IgE elicitors in acute allergic reactions.¹¹⁹ In the vascular setting, high C3/C4 plasma levels have been observed in primary hypercholesterolemic patients, and C5 has been suggested as a subclinical atherosclerosis biomarker.^{120,121} The effect of complement activation in vascular wall remodeling is similar to that observed in coagulation.¹²² Aortic tissue from mice or human atherosclerotic lesions upregulates mRNA of anaphylatoxin receptors C3a and C5a. C3 deficiency aggravated atherosclerosis by increasing the frequency of macrophages and decreasing vascular SMC content, yielding prone-to-rupture-plaques in LDLr^{-/-} or ApoE/LDLr^{-/-} mice.^{123,124} In

contrast, inhibition of C5 or CD88 (C5a receptor) in ApoE^{-/-} mice diminished plaques by attenuating inflammation.¹²⁵⁻¹²⁸

5.2 | Atherosclerotic potential of late phase inflammation

Th2 cells are at the heart of late-phase allergic inflammation, which contrasts with the atherosclerotic ambient governed by M1 macrophages and IFN- γ -producing Th1 cells.^{59,129,130} The mutually-suppressive Th1/Th2 equilibrium implied an atheroprotective role for Th2 cells by counteracting Th1 responses.¹³¹ In fact, Th2-biased mouse strains (BALB/c) are resistant to atherogenesis, while Th1-prone (C57BL/6) develop fatty streaks when HFD-fed.¹³²⁻¹³⁴ Also, some clinical studies have found that a high Th2 cell frequency in circulation is associated with a lower carotid intima-media thickness.^{135,136} On the other hand, the positive clinical association between allergic disease and CVD (Table 1), together with the few experimental studies in allergic inflammation, argues against the atheroprotective function of Th2 responses. This conundrum might be the result of a divergent role of homeostatic vs induced type 2 immunity in CVD (Figure 4).

The impact of allergic inflammation in atherosclerosis has been studied in ovalbumin(OVA)-sensitized ApoE^{-/-} mice on a chow diet and challenged with aerosolized OVA thrice per week during 8 and 16 weeks.⁶³ The allergic mice exhibited larger and more vulnerable lesions with increased macrophage and SMC infiltration, and less collagen content as compared to control mice.⁶³ Remarkably, anti-IL-4 or anti-IL-17A administration reduced lesion size, with a greater effect when combined.⁶³ Another group applied an allergic asthma model in ApoE^{-/-} mice for 12 weeks; the HFD started before, after, or at the same time of sensitization.⁶² Allergic mice had lesions with more pathogenic features (lesion cell proliferation, collagen and elastin degradation, SMC loss, apoptosis and angiogenesis) than control mice. However, mice only had larger lesion size when allergy was induced concomitantly with the introduction of a HFD.⁶² Also, daily treatment with nebulized ketotifen (MC inhibitor), or budesonide (corticosteroid) alleviated lesion pathology, but did not reduce lesion size.⁶² These studies demonstrate that exacerbated atherosclerosis in allergic asthma is partly mediated by IL-4 and IL-17, and the involvement of a MC-independent mechanism driven by allergic inflammation. Notwithstanding, the association between allergic disease and atherosclerosis is blurred when type 2 immunity players are studied individually outside of allergic pathology.^{129,130}

5.2.1 | IL-4 and IL-13

The role of IL-4 in atherosclerosis is unclear. Some gain- and loss-of-function experiments (IL-4 administration, IL-4 deficiency) in ApoE^{-/-} or LDLR^{-/-} mice showed that IL-4 did not affect lesion size or composition.^{137,138} Yet, another group reported that IL-4 administration decreased lesion size by impairing Th1-cell expression in

C57BL/6 mice.¹³³ Moreover, a novel study using IL-4/IL13-deficient mice and several atherosclerosis models discovered that the Wnt signaling pathway favoured IL-4 responsiveness in macrophages and enhanced atherosclerosis resolution.¹³⁹ In contrast, others suggest a proatherogenic effect for IL-4 based on the reduced plaque size observed in IL-4-deficient mice on an ApoE^{-/-} or LDLR^{-/-} background with atherosclerosis induced by a HFD or inflammatory stimulus.¹⁴⁰⁻¹⁴²

While IL-4 data on atherosclerosis are inconclusive, potentially due, in part, to the heterogeneity of mouse strains and models applied, IL-13 has been reported atheroprotective. IL-13^{-/-} bone marrow chimeric LDLR^{-/-} mice exhibited suppressed M2 macrophage activation that accelerated atherosclerosis. Additionally, IL-13 administration induced a more stable plaque composition (increased collagen content and M2 macrophage polarization, and reduced macrophage accumulation).¹⁴³ Also, IL-13-deficient mice exhibited increased weight gain, hyperglycemia, and hepatic insulin resistance.¹⁴⁴ In vitro and in vivo data support that activated T-regulatory (Treg)-cell-derived IL-13 induces IL-10 secretion and efferocytosis by macrophages, which controls atherosclerosis.¹⁴⁵ Moreover, it has been reported that oxLDL treatment downregulates IL-13 expression in eosinophils and promotes M1 macrophages.¹⁴⁶

IL-4 and IL-13 share a common receptor-signaling pathway, which can be inhibited with IL-4R α -specific antibodies (e.g., dupilumab). Recently, a significant correlation was reported between vascular inflammation and Th2-related products in the skin and blood of young moderate-to-severe AD patients as compared to controls.¹⁴⁷ Interestingly, dupilumab treatment for 16 weeks significantly modulated the expression of 23/63 atherosclerosis-related genes in AD patients.¹⁴⁷

5.2.2 | IL-5 and eosinophils

Experimental studies have attributed an indirect atheroprotective effect to IL-5. It has been shown that IL-5 induces B1 cell expansion and natural IgM production, some of which blocks oxLDL.¹⁴⁸⁻¹⁵¹ Although human plasma IL-5 levels do not predict CVD risk, high IL-5 levels have been associated with lower carotid intima-media thickness and increased oxLDL-specific antibody production.^{149,152} Eosinophils also appear to participate in atherosclerosis^{153,154} as they were absent within stable human plaques but were detected in the ruptured ones.¹⁵⁵ A recent study using eosinophil-deficient ApoE^{-/-} mice delineated a self-reinforcing interplay between eosinophils and platelets in atherosclerosis. CCL5 and particularly CCL11 were increased in atherosclerotic plaques.¹⁵⁶ This was associated with endothelial activation and exposure of von Willebrand factor (VWF), which induced platelet adhesion to the vessel wall and empowered eosinophil recruitment. Platelet-eosinophil interactions contributed to reciprocal activation and fostered plaque formation¹⁵⁶; activated eosinophils release granules or extracellular traps that contain components, such as eosinophil cationic protein (ECP), and participate in atherosclerosis.^{154,157,158} ECP induces CD54 (ICAM-1) expression on endothelial cells, leading to monocyte adhesion, and regulates

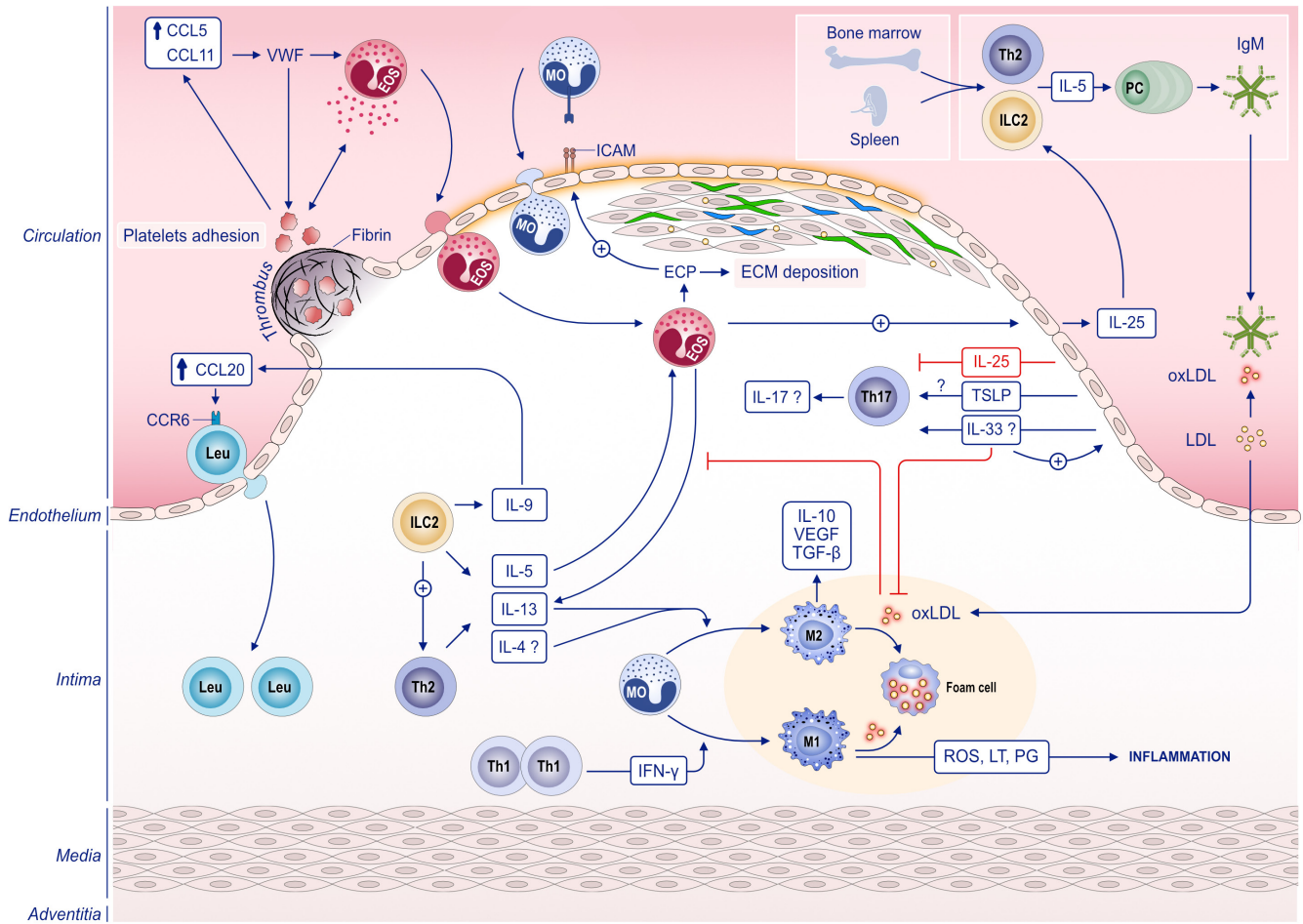


FIGURE 4 Putative atherosclerotic mechanisms of late phase allergic inflammation. The atherosclerotic plaque usually contains macrophages and Th1 lymphocytes, with only a few cells producing Th2-type or Th17-type cytokines. Th2 responses are promoted by type 2 innate lymphocytes (ILC2) which generate Th2-related cytokines (IL-4, IL-5, IL-9, IL-13). The role of IL-4 in atherosclerosis is incompletely understood. Both IL-13 and IL-4 promote protective M2-macrophage polarization and IL-10, VEGF and TGF- β secretion. In contrast, Th1 cell-derived IFN- γ induces proinflammatory M1-macrophage polarization and reactive oxygen species (ROS), prostaglandins (PG) and leukotrienes (LT) production. IL-9 induces CCL20 expression that binds to CCR6 promoting cell recruitment into the plaque. IL-5 has been attributed to an indirect atheroprotective effect by inducing IgM-secreting B1 cells, which can recognize oxLDL. In contrast, IL-5 exacerbates eosinophilic inflammation; eosinophils (Eos) can be recruited into the plaque through the CCL5/CCL11-von Willebrand factor (VWF) axis. In turn, VWF promotes platelet adhesion that increases CCL5 levels. These events together with the eosinophil-platelet interaction favour thrombus formation. Activated eosinophils release eosinophil cationic protein (ECP) which induces extracellular matrix (ECM) deposition and adhesion molecules expression (ICAM-1) facilitating monocyte (MO) extravasation. The cytotoxic activity of eosinophils damages endothelial cells that release alarmins (IL-25, IL-33 and TSLP). IL-25 decreases plaque Th17 responses and IL-17 levels, which have a controversial role. Circulating IL-25 stimulates bone marrow and splenic Th2 and ILC2 cells to produce atheroprotective IL-5. IL-33 activates the endothelium, but it can inhibit macrophage oxLDL uptake. The effect of TSLP in Th17 responses remains unclear. Leu, leukocytes; PC, plasma cell

fibroblast activity promoting proteoglycan and extracellular matrix deposition. Indeed, it has been described that serum ECP levels are increased in patients with allergy and coronary atherosclerosis.^{153,159} Additional clinical studies have shown a positive correlation between eosinophil counts and coronary artery calcification.¹⁶⁰

5.2.3 | The alarmin-ILC2 axis

Alarmins such as IL-33, TLSP and IL-25 are involved in both allergic sensitization and inflammation.^{161,162} The role of IL-33 in CVD is

controversial. Its administration in ApoE^{-/-} mice reduced plaque size via IL-5 and oxLDL-specific antibodies.¹⁶³ The co-administration of IL-33 with anti-IL-5 prevented plaque size reduction, but not the decreased macrophage infiltration, thus revealing an IL-5-independent atheroprotective mechanism for IL-33.¹⁶³ Moreover, IL-33 administration impaired foam macrophage formation in vitro and in ApoE^{-/-} mice by reducing oxLDL uptake, intracellular cholesterol content, and enhancing cholesterol efflux.¹⁶⁴ A few reports have further explored the atheroprotective effect of IL-33 at the genetic level in macrophages.¹⁶⁵⁻¹⁶⁷ Nevertheless, others have shown contradictory results, where IL-33 promoted endothelial activation.¹⁶⁸ Of note,

IL-33 deficiency in ApoE^{-/-} altered neither atherosclerotic lesion nor the Th1/Th2 cytokine profile in supernatants of stimulated lymph node cells, which questions the role of endogenous IL-33.¹⁶⁹

Genetic or antibody inhibition of IL-25 during plaque formation in ApoE^{-/-} mice promoted Th1/Th17-related immune responses that induced larger lesions in the aortic arch.¹⁷⁰ Accordingly, IL-25 treatment of ApoE^{-/-} mice reduced atherosclerosis via IL-5-producing-ILC2 expansion.¹⁷¹ In human PBMCs, IL-25 has been reported to decrease Th1 and Th17 responses.¹⁷²

TSLP and its receptor have been detected in human plaques.¹⁷³⁻¹⁷⁵ Angiotensin II-induced TSLP promotes atherogenic Th17 responses.^{173,174} It has been reported to induce a Th17/Treg imbalance in ApoE^{-/-} mice.¹⁷⁵ In contrast, TSLP was shown to inhibit plaque formation in ApoE^{-/-} mice by inducing tolerogenic dendritic cells and Tregs; this caused a phenotypic switch from an inflammatory Th1 toward a non-inflammatory Th2 phenotype, and oxLDL-specific antibody production.¹⁷⁶

ILC2 can secrete large quantities of IL-5, IL-13 and IL-9,^{162,177} and have been identified in cardiovascular tissues.^{178,179} Bone marrow chimera experiments showed that genetic deletion of ILC2 in LDLr^{-/-} mice aggravates atherosclerosis; the reconstitution with ILC2 was protective but not when IL-5- or IL-13-deficient ILC2 were used.¹⁷⁸ ApoE^{-/-} mice transferred with ILC2 exhibited decreased lipid content and increased peritoneal B1 cells.¹⁸⁰ Moreover, it has been reported that IL-25-driven ILC2 expansion reduced plaque development through the IL-5-B1-IgM axis in ApoE^{-/-} mice.¹⁷¹ In vitro and in vivo experiments revealed an atheroprotective role for Treg cells by expanding ILC2 and increasing IL-13 secretion.¹⁸¹

5.2.4 | Other players of allergic inflammation

IL-9 participates in several pathologies including allergic inflammation.^{182,183} IL-9 blockade in ApoE^{-/-} mice decreased macrophage and T-cell infiltration in lesions, which reduced atherosclerosis, and exogenous IL-9 administration had the opposite effect.¹⁸⁴ Moreover, Blimp-1-mediated inhibition of Th9 cell differentiation was protective in a diabetic coronary heart disease rat model.¹⁸⁵ In line, acute coronary syndrome patients showed a greater number of peripheral CD4⁺IL-9⁺ T cells and IL-9 levels^{184,186}; and patients with carotid atherosclerosis had increased IL-9 levels too.¹⁸⁷ In allergic disease, Th9 cells induce CCL17 and CCL22 expression,¹⁸⁸ which facilitate atherosclerosis.^{189,190} Additional studies in ApoE^{-/-} mice revealed that CCR6 and CCL20, which are induced by IL-9, are proatherogenic.^{191,192}

The role of IL-17A in atherosclerosis is controversial.¹⁹³⁻¹⁹⁵ For instance, IL17A-deficient ApoE^{-/-} mice had smaller plaques in the aortic arch and roots than controls, but with a similar plaque burden in the thoracoabdominal aorta.¹⁹⁶ In stark contrast, in vivo administration of IL-17A reduced plaque burden in aortic roots of LDLr^{-/-} mice,¹⁹⁷ and may promote plaque stability by increasing vascular SMC collagen production.¹⁹⁸ Accumulating evidence suggests the participation of Th17 cells in allergic asthma and even the presence

of a subgroup of dual positive Th2/Th17 cells in bronchoalveolar lavage fluid from asthmatic patients.¹⁹⁹⁻²⁰¹ As abovementioned, data from experimental systems support a proatherogenic role for IL-17A in allergic asthma.⁶³

6 | CONCLUDING REMARKS & PROSPECTS

Allergy and atherosclerosis are immune-mediated diseases with an opposed T-cell identity and a profound vasculature involvement. From a simplistic standpoint, atherosclerosis could be referred to as a physical plumbing issue that leads to pipe clots, pressure changes and ruptures. Yet, atherosclerosis still stands as a major cause of mortality worldwide, with a dearth of curative treatment options, which unveils the intricate maze that it represents.

The repercussion of acute and late allergic inflammation in atherosclerosis remains poorly characterized. From a broader perspective, acute allergic reactions are the result of an inflammatory program that ultimately acts on the endothelium favouring cell diapedesis to respond to a threat. The fast-acting ability of this Ig-mediated response allows the immune system to react promptly to danger, but it comes with an endothelial toll, likely favouring the initiation or exacerbation of atherosclerosis.

The atherosclerotic role of several components classically associated with Th2 immunity has been studied, but mostly under non-allergic conditions and on an individual basis. However, Th2 responses are an integral part of a broader program, termed type 2 immunity, which has evolved not only to control parasites and non-microbial noxious substances, but also to regulate other homeostatic processes. Thus, understanding type 2 immunity and, particularly, atherogenic mechanisms of allergic diseases, requires a holistic approach that assesses the role of each cellular/molecular player in the allergic arena.

ACKNOWLEDGMENTS

The authors are very thankful to Dr. Anna Globinska and Melissa E. Gordon for graphic design and English editing, respectively.

FUNDING INFORMATION

RJS's laboratory acknowledges the support received by the Severo Ochoa Program (AEI/SEV-2017-0712), FSE/FEDER through the Instituto de Salud Carlos III (ISCIII; CP20/00043), The Nutricia Research Foundation (NRF-2021-13), New Frontiers in Research Fund (NRF-2019-00083), and SEAIC (BECA20A9). NFG and RCG are respectively supported by the Formación de Profesorado Universitario (FPU) program (FPU16/03953) and by Ayudas Margarita Salas para la Formación de Jóvenes Doctores—Universidad Autónoma de Madrid (CA1/RSUE/2021-00577) from the Spanish Ministry of Universities. NMB and VE are recipients of ISCIII grants (PI21/01126 and PI21/00158, respectively). BI is supported by the European Commission (H2020-HEALTH 945118 and ERC-CoG 819775), and by the Ministry of Science and Innovation

(PID2019-110369RB-I00). The CNIC is supported by the ISCIII, the Ministerio de Ciencia e Innovación and the Pro CNIC Foundation and is a Severo Ochoa Center of Excellence (CEX2020-001041-S). DB and ME recognize the support received by ISCIII (PI18/01467 and PI19/00044), co-funded by FEDER "Investing in your future" for the thematic network and co-operative research centres ARADyAL RD16/0006/0015 and RICORS Red de Enfermedades Inflamatorias (REI) RD21/0002/0008.

CONFLICT OF INTEREST

All the authors have no conflict of interest within the scope of the submitted work.

ORCID

Nieves Fernández-Gallego  <https://orcid.org/0000-0002-6968-1444>

Raquel Castillo-González  <https://orcid.org/0000-0002-9877-2126>

Nerea Méndez-Barbero  <https://orcid.org/0000-0003-1620-3067>

Celia López-Sanz  <https://orcid.org/0000-0001-7203-0290>

David Obeso  <https://orcid.org/0000-0001-7875-7327>

Alma Villaseñor  <https://orcid.org/0000-0002-6652-2739>

María M. Escribese  <https://orcid.org/0000-0001-5057-5150>

Beatriz López-Melgar  <https://orcid.org/0000-0002-9887-988X>

Jorge Salamanca  <https://orcid.org/0000-0002-5067-5052>

Luis Jesús Jiménez-Borreguero  <https://orcid.org/0000-0001-5870-237X>

Borja Ibañez  <https://orcid.org/0000-0002-5036-254X>

Joaquín Sastre  <https://orcid.org/0000-0003-4689-6837>

Francisco Vega  <https://orcid.org/0000-0002-6120-0714>

Domingo Barber  <https://orcid.org/0000-0002-5488-5700>

Francisco Sánchez-Madrid  <https://orcid.org/0000-0001-5303-0762>

Hortensia de la Fuente  <https://orcid.org/0000-0001-8708-753X>

Pilar Martín  <https://orcid.org/0000-0002-2392-1764>

Vanessa Esteban  <https://orcid.org/0000-0002-7500-6277>

Rodrigo Jiménez-Saiz  <https://orcid.org/0000-0002-0606-3251>

REFERENCES

- Dierick BJH, van der Molen T, Flokstra-de Blok BMJ, et al. Burden and socioeconomics of asthma, allergic rhinitis, atopic dermatitis and food allergy. *Expert Rev Pharmacoecon Outcomes Res.* 2020;20(5):437-453.
- Loh W, Tang MLK. The epidemiology of food allergy in the global context. *Int J Environ Res Public Health.* 2018;15(9):2043.
- Gonzalez-Freire B, Vazquez I, Pertega-Díaz S. The relationship of psychological factors and asthma control to Health-related quality of life. *J Allergy Clin Immunol Pract.* 2020;8(1):197-207.
- Mori F, Giovannini M, Barni S, et al. Oral immunotherapy for food-allergic children: a pro-con debate. *Front Immunol.* 2021;12(3861):636612.
- Jansson SA, Backman H, Andersson M, et al. Severe asthma is related to high societal costs and decreased health related quality of life. *Respir Med.* 2020;162:105860.
- Versluis A, Knulst AC, Michelsen-Huisman AD, et al. Accidental food-allergic reactions are associated with higher costs and more sick leave but not with quality of life. *Clin Exp Allergy.* 2021;51(4):627-630.
- Mendis S, Puska P, Norrving B, World Health O, World Heart F, World Stroke O. *Global Atlas on Cardiovascular Disease Prevention and Control.* World Health Organization; 2011.
- Roth GA, Mensah GA, Johnson CO, et al. Global burden of cardiovascular diseases and risk factors, 1990–2019: update from the GBD 2019 study. *J Am Coll Cardiol.* 2020;76(25):2982-3021.
- Andersson C, Vasan RS. Epidemiology of cardiovascular disease in young individuals. *Nat Rev Cardiol.* 2018;15(4):230-240.
- Libby P, Buring JE, Badimon L, et al. Atherosclerosis. *Nat Rev Dis Primers.* 2019;5(1):56.
- Wang H, Naghavi M, Allen C, et al. Global, regional, and national life expectancy, all-cause mortality, and cause-specific mortality for 249 causes of death, 1980–2015: a systematic analysis for the global burden of disease study 2015. *Lancet.* 2016;388(10053):1459-1544.
- Townsend N, Kazakiewicz D, Lucy Wright F, et al. Epidemiology of cardiovascular disease in Europe. *Nat Rev Cardiol.* 2022;19(2):133-143.
- Lechner K, von Schacky C, McKenzie AL, et al. Lifestyle factors and high-risk atherosclerosis: pathways and mechanisms beyond traditional risk factors. *Eur J Prev Cardiol.* 2020;27(4):394-406.
- Gistera A, Hansson GK. The immunology of atherosclerosis. *Nat Rev Nephrol.* 2017;13(6):368-380.
- Fuster V, Badimon L, Badimon JJ, Chesebro JH. The pathogenesis of coronary artery disease and the acute coronary syndromes (1). *N Engl J Med.* 1992;326(4):242-250.
- Fuster V, Badimon L, Badimon JJ, Chesebro JH. The pathogenesis of coronary artery disease and the acute coronary syndromes (2). *N Engl J Med.* 1992;326(5):310-318.
- Knuuti J, Wijns W, Saraste A, et al. 2019 ESC guidelines for the diagnosis and management of chronic coronary syndromes. *Eur Heart J.* 2020;41(3):407-477.
- Hansson GK. Inflammation, atherosclerosis, and coronary artery disease. *N Engl J Med.* 2005;352(16):1685-1695.
- Boren J, Chapman MJ, Krauss RM, et al. Low-density lipoproteins cause atherosclerotic cardiovascular disease: pathophysiological, genetic, and therapeutic insights: a consensus statement from the European atherosclerosis society consensus panel. *Eur Heart J.* 2020;41(24):2313-2330.
- Randolph GJ. Mechanisms that regulate macrophage burden in atherosclerosis. *Circ Res.* 2014;114(11):1757-1771.
- Babaev VR, Fazio S, Gleaves LA, Carter KJ, Semenkovich CF, Linton MF. Macrophage lipoprotein lipase promotes foam cell formation and atherosclerosis in vivo. *J Clin Invest.* 1999;103(12):1697-1705.
- Kimura T, Kobiyama K, Winkels H, et al. Regulatory CD4(+) T cells recognize major histocompatibility complex class II molecule-restricted peptide epitopes of apolipoprotein B. *Circulation.* 2018;138(11):1130-1143.
- Tsilingiri K, de la Fuente H, Relano M, et al. Oxidized low-density lipoprotein receptor in lymphocytes prevents atherosclerosis and predicts subclinical disease. *Circulation.* 2019;139(2):243-255.
- El-Naccache DW, Hasko G, Gause WC. Early events triggering the initiation of a type 2 immune response. *Trends Immunol.* 2021;42(2):151-164.
- Akdis CA. Does the epithelial barrier hypothesis explain the increase in allergy, autoimmunity and other chronic conditions? *Nat Rev Immunol.* 2021;21(11):739-751.
- Martin-Lopez L, Lopez-Matas MA, Calzada D, et al. Environmental exposure of Der p 23 in household dust samples. *Clin Exp Allergy.* 2021;51(12):1645-1647.
- Brough HA, Mills ENC, Richards K, Lack G, Johnson PE. Mass spectrometry confirmation that clinically important peanut protein allergens are present in household dust. *Allergy.* 2020;75(3):709-712.

28. Shamji MH, Valenta R, Jardetzky T, et al. The role of allergen-specific IgE, IgG and IgA in allergic disease. *Allergy*. 2021;76(12):3627-3641.
29. Jonsson F, de Chaisemartin L, Granger V, et al. An IgG-induced neutrophil activation pathway contributes to human drug-induced anaphylaxis. *Sci Transl Med*. 2019;11(500):eaat1479.
30. Jimenez-Saiz R, Ellenbogen Y, Koenig JFE, et al. IgG1(+) B-cell immunity predates IgE responses in epicutaneous sensitization to foods. *Allergy*. 2019;74(1):165-175.
31. Bilo MB, Martini M, Tontini C, Corsi A, Antonicelli L. Anaphylaxis. *Eur Ann Allergy Clin Immunol*. 2021;53(1):4-17.
32. Mendez-Barbero N, Yuste-Montalvo A, Nunez-Borque E, et al. The TNF-like weak inducer of the apoptosis/fibroblast growth factor-inducible molecule 14 axis mediates histamine and platelet-activating factor-induced subcutaneous vascular leakage and anaphylactic shock. *J Allergy Clin Immunol*. 2020;145(2):583-596 e586.
33. Ruiz-Garcia M, Bartra J, Alvarez O, et al. Cardiovascular changes during peanut-induced allergic reactions in human subjects. *J Allergy Clin Immunol*. 2021;147(2):633-642.
34. Yamani A, Wu D, Waggoner L, et al. The vascular endothelial specific IL-4 receptor alpha-ABL1 kinase signaling axis regulates the severity of IgE-mediated anaphylactic reactions. *J Allergy Clin Immunol*. 2018;142(4):1159-1172 e1155.
35. Nunez-Borque E, Fernandez-Bravo S, Yuste-Montalvo A, Esteban V. Pathophysiological, cellular, and molecular events of the vascular system in anaphylaxis. *Front Immunol*. 2022;13:836222.
36. Galli SJ, Tsai M, Piliponsky AM. The development of allergic inflammation. *Nature*. 2008;454(7203):445-454.
37. Bartemes KR, Kita H. Roles of innate lymphoid cells (ILCs) in allergic diseases: the 10-year anniversary for ILC2s. *J Allergy Clin Immunol*. 2021;147(5):1531-1547.
38. Al-Shaikhly T, Murphy RC, Parker A, et al. Location of eosinophils in the airway wall is critical for specific features of airway hyperresponsiveness and T2 inflammation in asthma. *Eur Respir J*. 2022;2101865.
39. Dubin C, Del Duca E, Guttman-Yassky E. The IL-4, IL-13 and IL-31 pathways in atopic dermatitis. *Expert Rev Clin Immunol*. 2021;17(8):835-852.
40. Bangert C, Rindler K, Krausgruber T, et al. Persistence of mature dendritic cells, TH2A, and Tc2 cells characterize clinically resolved atopic dermatitis under IL-4Ralpha blockade. *Sci Immunol*. 2021;6(55):eabe2749.
41. Koenig JFE, Bruton K, Phelps A, Grydziusko E, Jimenez-Saiz R, Jordana M. Memory generation and re-activation in food allergy. *Immunotargets Ther*. 2021;10:171-184.
42. Leyva-Castillo JM, Galand C, Mashiko S, et al. ILC2 activation by keratinocyte-derived IL-25 drives IL-13 production at sites of allergic skin inflammation. *J Allergy Clin Immunol*. 2020;145(6):1606-1614 e1604.
43. Hirahara K, Aoki A, Kiuchi M, Nakayama T. Memory-type pathogenic TH2 cells and ILC2s in type 2 allergic inflammation. *J Allergy Clin Immunol*. 2021;147(6):2063-2066.
44. Meizlish ML, Franklin RA, Zhou X, Medzhitov R. Tissue homeostasis and inflammation. *Annu Rev Immunol*. 2021;39:557-581.
45. Lambert K, Tse R, Tettamanti C, et al. Postmortem IgE determination in coronary artery disease. *J Forensic Leg Med*. 2019;62:1-6.
46. Iribarren C, Tolstykh IV, Miller MK, Sobel E, Eisner MD. Adult asthma and risk of coronary heart disease, cerebrovascular disease, and heart failure: a prospective study of 2 matched cohorts. *Am J Epidemiol*. 2012;176(11):1014-1024.
47. Ascott A, Mulick A, Yu AM, et al. Atopic eczema and major cardiovascular outcomes: a systematic review and meta-analysis of population-based studies. *J Allergy Clin Immunol*. 2019;143(5):1821-1829.
48. Chester J, Kaleci S, Liberati S, et al. Atopic dermatitis associated with autoimmune, cardiovascular and mental health comorbidities: a systematic review and meta-analysis. *Eur J Dermatol*. 2021;32(1):34-48.
49. Ivert LU, Johansson EK, Dal H, Lindelof B, Wahlgren CF, Bradley M. Association between atopic dermatitis and cardiovascular disease: a Nationwide register-based case-control study from Sweden. *Acta Derm Venereol*. 2019;99(10):865-870.
50. Suarez-Farinas M, Dhingra N, Gittler J, et al. Intrinsic atopic dermatitis shows similar TH2 and higher TH17 immune activation compared with extrinsic atopic dermatitis. *J Allergy Clin Immunol*. 2013;132(2):361-370.
51. Crans Yoon AM, Chiu V, Rana JS, Sheikh J. Association of allergic rhinitis, coronary heart disease, cerebrovascular disease, and all-cause mortality. *Ann Allergy Asthma Immunol*. 2016;117(4):359-364 e351.
52. Rhee TM, Choi EK, Han KD, Lee SR, Oh S. Impact of the combinations of allergic diseases on myocardial infarction and mortality. *J Allergy Clin Immunol Pract*. 2021;9(2):872-880 e874.
53. Sheha DS, El-Korashi LA, AbdAllah AM, El-Begery MM, Elmahdi AR. Dyslipidemia among allergic rhinitis patients: frequency and risk factors. *World Allergy Organ J*. 2021;14(3):100523.
54. La Mantia I, Andaloro C, Albanese PG, Varricchio A. Blood lipid levels related to allergic rhinitis: a significant association. *EuroMediterranean Biomed J*. 2017;12(30):144-147.
55. Wilson JM, Nguyen AT, Schuyler AJ, et al. IgE to the mammalian oligosaccharide galactose-alpha-1,3-galactose is associated with increased atheroma volume and plaques with unstable characteristics-brief report. *Arterioscler Thromb Vasc Biol*. 2018;38(7):1665-1669.
56. Saretta F, Giovannini M, Mori F, et al. Alpha-gal syndrome in children: peculiarities of a "tick-borne" allergic disease. *Front Pediatr*. 2021;9:801753.
57. Chakrapani N, Fischer J, Swiontek K, et al. Alpha-gal present on both glycolipids and glycoproteins contributes to immune response in meat-allergic patients. *J Allergy Clin Immunol*. 2022;12:S0091-6749(22)00381-5.
58. Knoflach M, Kiechl S, Mayr A, Willeit J, Poewe W, Wick G. Allergic rhinitis, asthma, and atherosclerosis in the Bruneck and ARMY studies. *Arch Intern Med*. 2005;165(21):2521-2526.
59. Hansson GK, Libby P. The immune response in atherosclerosis: a double-edged sword. *Nat Rev Immunol*. 2006;6(7):508-519.
60. Meir KS, Leitersdorf E. Atherosclerosis in the apolipoprotein-E-deficient mouse: a decade of progress. *Arterioscler Thromb Vasc Biol*. 2004;24(6):1006-1014.
61. Ishibashi S, Brown MS, Goldstein JL, Gerard RD, Hammer RE, Herz J. Hypercholesterolemia in low density lipoprotein receptor knockout mice and its reversal by adenovirus-mediated gene delivery. *J Clin Invest*. 1993;92(2):883-893.
62. Liu CL, Wang Y, Liao M, et al. Allergic lung inflammation promotes atherosclerosis in apolipoprotein E-deficient mice. *Transl Res*. 2016;171:1-16.
63. Wang L, Gao S, Xu W, et al. Allergic asthma accelerates atherosclerosis dependent on Th2 and Th17 in apolipoprotein E deficient mice. *J Mol Cell Cardiol*. 2014;72:20-27.
64. Wang J, Cheng X, Xiang MX, et al. IgE stimulates human and mouse arterial cell apoptosis and cytokine expression and promotes atherogenesis in ApoE^{-/-} mice. *J Clin Invest*. 2011;121(9):3564-3577.
65. Sun J, Sukhova GK, Wolters PJ, et al. Mast cells promote atherosclerosis by releasing proinflammatory cytokines. *Nat Med*. 2007;13(6):719-724.
66. Wezel A, Lagrauw HM, van der Velden D, et al. Mast cells mediate neutrophil recruitment during atherosclerotic plaque progression. *Atherosclerosis*. 2015;241(2):289-296.
67. Zhang X, Li J, Luo S, et al. IgE contributes to atherosclerosis and obesity by affecting macrophage polarization, macrophage protein network, and foam cell formation. *Arterioscler Thromb Vasc Biol*. 2020;40(3):597-610.

68. Sage AP, Nus M, Bagchi Chakraborty J, et al. X-box binding Protein-1 dependent plasma cell responses limit the development of atherosclerosis. *Circ Res*. 2017;121(3):270-281.
69. Tsiantoulas D, Bot I, Ozsvar-Kozma M, et al. Increased plasma IgE accelerate atherosclerosis in secreted IgM deficiency. *Circ Res*. 2017;120(1):78-84.
70. Wang Y, Kremer V, Iannascoli B, et al. Specificity of mouse and human Fcγ receptors and their polymorphic variants for IgG subclasses of different species. *Eur J Immunol*. 2022;52(5):753-759.
71. Porsch F, Mallat Z, Binder CJ. Humoral immunity in atherosclerosis and myocardial infarction: from B cells to antibodies. *Cardiovasc Res*. 2021;117(13):2544-2562.
72. Prasad A, Clopton P, Ayers C, et al. Relationship of autoantibodies to MDA-LDL and ApoB-immune complexes to sex, ethnicity, subclinical atherosclerosis, and cardiovascular events. *Arterioscler Thromb Vasc Biol*. 2017;37(6):1213-1221.
73. Hutchinson MA, Park HS, Zanotti KJ, et al. Auto-antibody production during experimental atherosclerosis in ApoE(-/-) mice. *Front Immunol*. 2021;12:695220.
74. Mallavia B, Oguiza A, Lopez-Franco O, et al. Gene deficiency in activating Fcγ receptors influences the macrophage phenotypic balance and reduces atherosclerosis in mice. *PLoS One*. 2013;8(6):e66754.
75. Schiopu A, Frendeus B, Jansson B, et al. Recombinant antibodies to an oxidized low-density lipoprotein epitope induce rapid regression of atherosclerosis in apobec-1(-)/low-density lipoprotein receptor(-) mice. *J Am Coll Cardiol*. 2007;50(24):2313-2318.
76. Lorenzo C, Delgado P, Busse CE, et al. ALDH4A1 is an atherosclerosis auto-antigen targeted by protective antibodies. *Nature*. 2021;589(7841):287-292.
77. de Vries MR, Ewing MM, de Jong RCM, et al. Identification of IgG1 isotype phosphorylcholine antibodies for the treatment of inflammatory cardiovascular diseases. *J Intern Med*. 2021;290(1):141-156.
78. Maurer M, Taube C, Schroder NWJ, et al. Mast cells drive IgE-mediated disease but might be bystanders in many other inflammatory and neoplastic conditions. *J Allergy Clin Immunol*. 2019;144(4S):S19-S30.
79. Dudeck A, Koberle M, Goldmann O, et al. Mast cells as protectors of health. *J Allergy Clin Immunol*. 2019;144(4S):S4-S18.
80. Blank U, Falcone FH, Nilsson G. The history of mast cell and basophil research - some lessons learnt from the last century. *Allergy*. 2013;68(9):1093-1101.
81. Bot I, Shi GP, Kovanen PT. Mast cells as effectors in atherosclerosis. *Arterioscler Thromb Vasc Biol*. 2015;35(2):265-271.
82. Bot I, de Jager SC, Zerneck A, et al. Perivascular mast cells promote atherogenesis and induce plaque destabilization in apolipoprotein E-deficient mice. *Circulation*. 2007;115(19):2516-2525.
83. Heikkilä HM, Trosien J, Metso J, et al. Mast cells promote atherosclerosis by inducing both an atherogenic lipid profile and vascular inflammation. *J Cell Biochem*. 2010;109(3):615-623.
84. Fassio F, Losappio L, Antolin-Amerigo D, et al. Kounis syndrome: a concise review with focus on management. *Eur J Intern Med*. 2016;30:7-10.
85. Ramalho LS, Oliveira LF, Cavellani CL, et al. Role of mast cell chymase and tryptase in the progression of atherosclerosis: study in 44 autopsied cases. *Ann Diagn Pathol*. 2013;17(1):28-31.
86. Filipiak KJ, Tarchalska-Krynska B, Opolski G, et al. Tryptase levels in patients after acute coronary syndromes: the potential new marker of an unstable plaque? *Clin Cardiol*. 2003;26(8):366-372.
87. Heikkilä HM, Latti S, Leskinen MJ, Hakala JK, Kovanen PT, Lindstedt KA. Activated mast cells induce endothelial cell apoptosis by a combined action of chymase and tumor necrosis factor-α. *Arterioscler Thromb Vasc Biol*. 2008;28(2):309-314.
88. Judstrom I, Jukkola H, Metso J, Jauhiainen M, Kovanen PT, Lee-Rueckert M. Mast cell-dependent proteolytic modification of HDL particles during anaphylactic shock in the mouse reduces their ability to induce cholesterol efflux from macrophage foam cells ex vivo. *Atherosclerosis*. 2010;208(1):148-154.
89. Bot I, Bot M, van Heiningen SH, et al. Mast cell chymase inhibition reduces atherosclerotic plaque progression and improves plaque stability in ApoE(-/-) mice. *Cardiovasc Res*. 2011;89(1):244-252.
90. Uehara Y, Urata H, Ideishi M, Arakawa K, Saku K. Chymase inhibition suppresses high-cholesterol diet-induced lipid accumulation in the hamster aorta. *Cardiovasc Res*. 2002;55(4):870-876.
91. Dabravolski SA, Khotina VA, Omelchenko AV, Kalmykov VA, Orekhov AN. The role of the VEGF family in atherosclerosis development and its potential as treatment targets. *Int J Mol Sci*. 2022;23(2):931.
92. Subramanian M, Thorp E, Tabas I. Identification of a non-growth factor role for GM-CSF in advanced atherosclerosis: promotion of macrophage apoptosis and plaque necrosis through IL-23 signaling. *Circ Res*. 2015;116(2):e13-e24.
93. Wigren M, Rattik S, Hultman K, et al. Decreased levels of stem cell factor in subjects with incident coronary events. *J Intern Med*. 2016;279(2):180-191.
94. Wang KY, Tanimoto A, Guo X, et al. Histamine deficiency decreases atherosclerosis and inflammatory response in apolipoprotein E knockout mice independently of serum cholesterol level. *Arterioscler Thromb Vasc Biol*. 2011;31(4):800-807.
95. Yamada S, Wang KY, Tanimoto A, Sasaguri Y. Novel function of histamine signaling in hyperlipidemia-induced atherosclerosis: histamine H1 receptors protect and H2 receptors accelerate atherosclerosis. *Pathol Int*. 2015;65(2):67-80.
96. Nguyen SMT, Rupprecht CP, Haque A, Pattanaik D, Yusin J, Krishnaswamy G. Mechanisms governing anaphylaxis: inflammatory cells, mediators, endothelial gap junctions and beyond. *Int J Mol Sci*. 2021;22(15):7785.
97. Tsoupras A, Lordan R, Zabetakis I. Inflammation, not cholesterol, is a cause of chronic disease. *Nutrients*. 2018;10(5):604.
98. Bussolino F, Camussi G. Platelet-activating factor produced by endothelial cells. A molecule with autocrine and paracrine properties. *Eur J Biochem*. 1995;229(2):327-337.
99. Rios FJ, Gidlund M, Jancar S. Pivotal role for platelet-activating factor receptor in CD36 expression and oxLDL uptake by human monocytes/macrophages. *Cell Physiol Biochem*. 2011;27(3-4):363-372.
100. Rosenson RS, Stafforini DM. Modulation of oxidative stress, inflammation, and atherosclerosis by lipoprotein-associated phospholipase A2. *J Lipid Res*. 2012;53(9):1767-1782.
101. Upton JEM, Hoang JA, Leon-Ponte M, et al. Platelet-activating factor acetylhydrolase is a biomarker of severe anaphylaxis in children. *Allergy*. 2022;77:2665-2676. doi:10.1111/all.15308
102. Stafforini DM, McIntyre TM, Carter ME, Prescott SM. Human plasma platelet-activating factor acetylhydrolase. Association with lipoprotein particles and role in the degradation of platelet-activating factor. *J Biol Chem*. 1987;262(9):4215-4222.
103. Stremmel KE, Stafforini DM, Prescott SM, McIntyre TM. Human plasma platelet-activating factor acetylhydrolase. Oxidatively fragmented phospholipids as substrates. *J Biol Chem*. 1991;266(17):11095-11103.
104. Noto H, Hara M, Karasawa K, et al. Human plasma platelet-activating factor acetylhydrolase binds to all the murine lipoproteins, conferring protection against oxidative stress. *Arterioscler Thromb Vasc Biol*. 2003;23(5):829-835.
105. Helgadóttir A, Manolescu A, Thorleifsson G, et al. The gene encoding 5-lipoxygenase activating protein confers risk of myocardial infarction and stroke. *Nat Genet*. 2004;36(3):233-239.
106. Colazzo F, Gelosa P, Tremoli E, Sironi L, Castiglioni L. Role of the cysteinyl leukotrienes in the pathogenesis and progression of cardiovascular diseases. *Mediators Inflamm*. 2017;2017:2432958.
107. Back M, Hansson GK. Leukotriene receptors in atherosclerosis. *Ann Med*. 2006;38(7):493-502.

108. Hoxha M, Lewis-Mikhael AM, Bueno-Cavanillas A. Potential role of leukotriene receptor antagonists in reducing cardiovascular and cerebrovascular risk: a systematic review of human clinical trials and in vivo animal studies. *Biomed Pharmacother.* 2018;106:956-965.
109. Eikelboom JW, Connolly SJ, Bosch J, et al. Rivaroxaban with or without aspirin in stable cardiovascular disease. *N Engl J Med.* 2017;377(14):1319-1330.
110. Borissoff JI, Otten JJ, Heeneman S, et al. Genetic and pharmacological modifications of thrombin formation in apolipoprotein E-deficient mice determine atherosclerosis severity and atherothrombosis onset in a neutrophil-dependent manner. *PLoS One.* 2013;8(2):e55784.
111. Lee IO, Kratz MT, Schirmer SH, Baumhakel M, Bohm M. The effects of direct thrombin inhibition with dabigatran on plaque formation and endothelial function in apolipoprotein E-deficient mice. *J Pharmacol Exp Ther.* 2012;343(2):253-257.
112. Westrick RJ, Bodary PF, Xu Z, Shen YC, Broze GJ, Eitzman DT. Deficiency of tissue factor pathway inhibitor promotes atherosclerosis and thrombosis in mice. *Circulation.* 2001;103(25):3044-3046.
113. Khallou-Laschet J, Caligiuri G, Tupin E, et al. Role of the intrinsic coagulation pathway in atherogenesis assessed in hemophilic apolipoprotein E knockout mice. *Arterioscler Thromb Vasc Biol.* 2005;25(8):e123-e126.
114. Hara T, Fukuda D, Tanaka K, et al. Rivaroxaban, a novel oral anticoagulant, attenuates atherosclerotic plaque progression and destabilization in ApoE-deficient mice. *Atherosclerosis.* 2015;242(2):639-646.
115. Vorlova S, Koch M, Manthey HD, et al. Coagulation factor XII induces pro-inflammatory cytokine responses in macrophages and promotes atherosclerosis in mice. *Thromb Haemost.* 2017;117(1):176-187.
116. Ngo ATP, Jordan KR, Mueller PA, et al. Pharmacological targeting of coagulation factor XI mitigates the development of experimental atherosclerosis in low-density lipoprotein receptor-deficient mice. *J Thromb Haemost.* 2021;19(4):1001-1017.
117. Shnerb Ganor R, Harats D, Schiby G, et al. Factor XI deficiency protects against atherogenesis in apolipoprotein E/ factor XI double knockout mice. *Arterioscler Thromb Vasc Biol.* 2016;36(3):475-481.
118. Kaschina E, Stoll M, Sommerfeld M, Steckelings UM, Kreutz R, Unger T. Genetic kininogen deficiency contributes to aortic aneurysm formation but not to atherosclerosis. *Physiol Genomics.* 2004;19(1):41-49.
119. Cianferoni A. Non-IgE-mediated anaphylaxis. *J Allergy Clin Immunol.* 2021;147(4):1123-1131.
120. Sampietro T, Bigazzi F, Rossi G, et al. Upregulation of the immune system in primary hypercholesterolaemia: effect of atorvastatin therapy. *J Intern Med.* 2005;257(6):523-530.
121. Martinez-Lopez D, Roldan-Montero R, Garcia-Marques F, et al. Complement C5 protein as a marker of subclinical atherosclerosis. *J Am Coll Cardiol.* 2020;75(16):1926-1941.
122. Morgan BP. The membrane attack complex as an inflammatory trigger. *Immunobiology.* 2016;221(6):747-751.
123. Buono C, Come CE, Witztum JL, et al. Influence of C3 deficiency on atherosclerosis. *Circulation.* 2002;105(25):3025-3031.
124. Persson L, Boren J, Robertson AK, Wallenius V, Hansson GK, Pekna M. Lack of complement factor C3, but not factor B, increases hyperlipidemia and atherosclerosis in apolipoprotein E^{-/-} low-density lipoprotein receptor^{-/-} mice. *Arterioscler Thromb Vasc Biol.* 2004;24(6):1062-1067.
125. Wu G, Hu W, Shahsafaei A, et al. Complement regulator CD59 protects against atherosclerosis by restricting the formation of complement membrane attack complex. *Circ Res.* 2009;104(4):550-558.
126. Yin C, Ackermann S, Ma Z, et al. ApoE attenuates unresolvable inflammation by complex formation with activated C1q. *Nat Med.* 2019;25(3):496-506.
127. Martin-Ventura JL, Martinez-Lopez D, Roldan-Montero R, Gomez-Guerrero C, Blanco-Colio LM. Role of complement system in pathological remodeling of the vascular wall. *Mol Immunol.* 2019;114:207-215.
128. Manthey HD, Thomas AC, Shiels IA, et al. Complement C5a inhibition reduces atherosclerosis in ApoE^{-/-} mice. *FASEB J.* 2011;25(7):2447-2455.
129. Saigusa R, Winkels H, Ley K. T cell subsets and functions in atherosclerosis. *Nat Rev Cardiol.* 2020;17(7):387-401.
130. Sun L, Zhang W, Zhao Y, et al. Dendritic cells and T cells, Partners in Atherogenesis and the translating road ahead. *Front Immunol.* 2020;11:1456.
131. Buono C, Binder CJ, Stavakis G, Witztum JL, Glimcher LH, Lichtman AH. T-bet deficiency reduces atherosclerosis and alters plaque antigen-specific immune responses. *Proc Natl Acad Sci USA.* 2005;102(5):1596-1601.
132. Paigen B, Morrow A, Brandon C, Mitchell D, Holmes P. Variation in susceptibility to atherosclerosis among inbred strains of mice. *Atherosclerosis.* 1985;57(1):65-73.
133. Huber SA, Sakkinen P, David C, Newell MK, Tracy RP. T helper-cell phenotype regulates atherosclerosis in mice under conditions of mild hypercholesterolemia. *Circulation.* 2001;103(21):2610-2616.
134. Schulte S, Sukhova GK, Libby P. Genetically programmed biases in Th1 and Th2 immune responses modulate atherogenesis. *Am J Pathol.* 2008;172(6):1500-1508.
135. Engelbertsen D, Andersson L, Ljungcrantz I, et al. T-helper 2 immunity is associated with reduced risk of myocardial infarction and stroke. *Arterioscler Thromb Vasc Biol.* 2013;33(3):637-644.
136. Tracy RP, Doyle MF, Olson NC, et al. T-helper type 1 bias in healthy people is associated with cytomegalovirus serology and atherosclerosis: the multi-ethnic study of atherosclerosis. *J Am Heart Assoc.* 2013;2(3):e000117.
137. George J, Mulkins M, Shaish A, et al. Interleukin (IL)-4 deficiency does not influence fatty streak formation in C57BL/6 mice. *Atherosclerosis.* 2000;153(2):403-411.
138. King VL, Cassis LA, Daugherty A. Interleukin-4 does not influence development of hypercholesterolemia or angiotensin II-induced atherosclerotic lesions in mice. *Am J Pathol.* 2007;171(6):2040-2047.
139. Weinstock A, Rahman K, Yaacov O, et al. Wnt signaling enhances macrophage responses to IL-4 and promotes resolution of atherosclerosis. *Elife.* 2021;10:e67932.
140. George J, Shoenfeld Y, Gilburd B, Afek A, Shaish A, Harats D. Requisite role for interleukin-4 in the acceleration of fatty streaks induced by heat shock protein 65 or mycobacterium tuberculosis. *Circ Res.* 2000;86(12):1203-1210.
141. King VL, Szilvassy SJ, Daugherty A. Interleukin-4 deficiency decreases atherosclerotic lesion formation in a site-specific manner in female LDL receptor^{-/-} mice. *Arterioscler Thromb Vasc Biol.* 2002;22(3):456-461.
142. Davenport P, Tipping PG. The role of interleukin-4 and interleukin-12 in the progression of atherosclerosis in apolipoprotein E-deficient mice. *Am J Pathol.* 2003;163(3):1117-1125.
143. Cardilo-Reis L, Gruber S, Schreier SM, et al. Interleukin-13 protects from atherosclerosis and modulates plaque composition by skewing the macrophage phenotype. *EMBO Mol Med.* 2012;4(10):1072-1086.
144. Stanya KJ, Jacobi D, Liu S, et al. Direct control of hepatic glucose production by interleukin-13 in mice. *J Clin Invest.* 2013;123(1):261-271.
145. Proto JD, Doran AC, Gusarova G, et al. Regulatory T cells promote macrophage efferocytosis during inflammation resolution. *Immunity.* 2018;49(4):666-677 e666.
146. Qin M, Wang L, Li F, et al. Oxidized LDL activated eosinophil polarize macrophage phenotype from M2 to M1 through activation of CD36 scavenger receptor. *Atherosclerosis.* 2017;263:82-91.

147. Villani AP, Pavel AB, Wu J, et al. Vascular inflammation in moderate-to-severe atopic dermatitis is associated with enhanced Th2 response. *Allergy*. 2021;76(10):3107-3121.
148. Binder CJ, Hartvigsen K, Chang MK, et al. IL-5 links adaptive and natural immunity specific for epitopes of oxidized LDL and protects from atherosclerosis. *J Clin Invest*. 2004;114(3):427-437.
149. Knutsson A, Bjorkbacka H, Duner P, et al. Associations of Interleukin-5 with plaque development and cardiovascular events. *JACC Basic Transl Sci*. 2019;4(8):891-902.
150. Zhao W, Lei T, Li H, et al. Macrophage-specific overexpression of interleukin-5 attenuates atherosclerosis in LDL receptor-deficient mice. *Gene Ther*. 2015;22(8):645-652.
151. Tsiantoulas D, Diehl CJ, Witztum JL, Binder CJ. B cells and humoral immunity in atherosclerosis. *Circ Res*. 2014;114(11):1743-1756.
152. Sampi M, Ukkola O, Paivansalo M, Kesaniemi YA, Binder CJ, Horkko S. Plasma interleukin-5 levels are related to antibodies binding to oxidized low-density lipoprotein and to decreased subclinical atherosclerosis. *J Am Coll Cardiol*. 2008;52(17):1370-1378.
153. Niccoli G, Ferrante G, Cosentino N, et al. Eosinophil cationic protein: a new biomarker of coronary atherosclerosis. *Atherosclerosis*. 2010;211(2):606-611.
154. Niccoli G, Montone RA, Sabato V, Crea F. Role of allergic inflammatory cells in coronary artery disease. *Circulation*. 2018;138(16):1736-1748.
155. van Dijk RA, Rijs K, Wezel A, et al. Systematic evaluation of the cellular innate immune response during the process of human atherosclerosis. *J Am Heart Assoc*. 2016;5(6):e002860.
156. Marx C, Novotny J, Salbeck D, et al. Eosinophil-platelet interactions promote atherosclerosis and stabilize thrombosis with eosinophil extracellular traps. *Blood*. 2019;134(21):1859-1872.
157. Herrnas J, Sarnstrand B, Lindroth P, Peterson CG, Venge P, Malmstrom A. Eosinophil cationic protein alters proteoglycan metabolism in human lung fibroblast cultures. *Eur J Cell Biol*. 1992;59(2):352-363.
158. Pertiwi KR, de Boer OJ, Mackaaij C, et al. Extracellular traps derived from macrophages, mast cells, eosinophils and neutrophils are generated in a time-dependent manner during atherothrombosis. *J Pathol*. 2019;247(4):505-512.
159. Acharya KR, Ackerman SJ. Eosinophil granule proteins: form and function. *J Biol Chem*. 2014;289(25):17406-17415.
160. Tanaka M, Fukui M, Tomiyasu K, et al. Eosinophil count is positively correlated with coronary artery calcification. *Hypertens Res*. 2012;35(3):325-328.
161. Hong H, Liao S, Chen F, Yang Q, Wang DY. Role of IL-25, IL-33, and TSLP in triggering united airway diseases toward type 2 inflammation. *Allergy*. 2020;75(11):2794-2804.
162. Spits H, Mjosberg J. Heterogeneity of type 2 innate lymphoid cells. *Nat Rev Immunol*. 2022.
163. Miller AM, Xu D, Asquith DL, et al. IL-33 reduces the development of atherosclerosis. *J Exp Med*. 2008;205(2):339-346.
164. McLaren JE, Michael DR, Salter RC, et al. IL-33 reduces macrophage foam cell formation. *J Immunol*. 2010;185(2):1222-1229.
165. Ashlin TG, Buckley ML, Salter RC, Johnson JL, Kwan AP, Ramji DP. The anti-atherogenic cytokine interleukin-33 inhibits the expression of a disintegrin and metalloproteinase with thrombospondin motifs-1, -4 and -5 in human macrophages: requirement of extracellular signal-regulated kinase, c-Jun N-terminal kinase and phosphoinositide 3-kinase signaling pathways. *Int J Biochem Cell Biol*. 2014;46:113-123.
166. Zhang HF, Wu MX, Lin YQ, et al. IL-33 promotes IL-10 production in macrophages: a role for IL-33 in macrophage foam cell formation. *Exp Mol Med*. 2017;49(11):e388.
167. Buckley ML, Williams JO, Chan YH, et al. The interleukin-33-mediated inhibition of expression of two key genes implicated in atherosclerosis in human macrophages requires MAP kinase, phosphoinositide 3-kinase and nuclear factor-kappaB signaling pathways. *Sci Rep*. 2019;9(1):11317.
168. Demyanets S, Stojkovic S, Huber K, Wojta J. The paradigm change of IL-33 in vascular biology. *Int J Mol Sci*. 2021;22(24):13288.
169. Martin P, Palmer G, Rodriguez E, et al. Atherosclerosis severity is not affected by a deficiency in IL-33/ST2 signaling. *Immun Inflamm Dis*. 2015;3(3):239-246.
170. Mantani PT, Duner P, Bengtsson E, et al. Interleukin-25 (IL-25) has a protective role in atherosclerosis development in the aortic arch in mice. *J Biol Chem*. 2018;293(18):6791-6801.
171. Mantani PT, Duner P, Bengtsson E, et al. IL-25 inhibits atherosclerosis development in apolipoprotein E deficient mice. *PLoS One*. 2015;10(1):e0117255.
172. Mantani PT, Vallejo J, Ljungcrantz I, Nilsson J, Bjorkbacka H, Fredrikson GN. Interleukin-25 reduces Th17 cells and inflammatory responses in human peripheral blood mononuclear cells. *Hum Immunol*. 2018;79(9):685-692.
173. Zhao H, Li M, Wang L, et al. Angiotensin II induces TSLP via an AT1 receptor/NF-KappaB pathway, promoting Th17 differentiation. *Cell Physiol Biochem*. 2012;30(6):1383-1397.
174. Lin J, Chang W, Dong J, et al. Thymic stromal lymphopoietin overexpressed in human atherosclerosis: potential role in Th17 differentiation. *Cell Physiol Biochem*. 2013;31(2-3):305-318.
175. Wu C, He S, Peng Y, et al. TSLPR deficiency attenuates atherosclerotic lesion development associated with the inhibition of TH17 cells and the promotion of regulator T cells in ApoE-deficient mice. *J Mol Cell Cardiol*. 2014;76:33-45.
176. Yu K, Zhu P, Dong Q, et al. Thymic stromal lymphopoietin attenuates the development of atherosclerosis in ApoE^{-/-} mice. *J Am Heart Assoc*. 2013;2(5):e000391.
177. Eberl G, Colonna M, Di Santo JP, McKenzie AN. Innate lymphoid cells. Innate lymphoid cells: a new paradigm in immunology. *Science*. 2015;348(6237):aaa6566.
178. Newland SA, Mohanta S, Clement M, et al. Type-2 innate lymphoid cells control the development of atherosclerosis in mice. *Nat Commun*. 2017;8:15781.
179. Deng Y, Wu S, Yang Y, et al. Unique phenotypes of Heart resident type 2 innate lymphoid cells. *Front Immunol*. 2020;11:802.
180. Mantani PT, Duner P, Ljungcrantz I, Nilsson J, Bjorkbacka H, Fredrikson GN. ILC2 transfers to apolipoprotein E deficient mice reduce the lipid content of atherosclerotic lesions. *BMC Immunol*. 2019;20(1):47.
181. Gao X, Lin J, Zheng Y, et al. Type 2 innate lymphoid cells regulation by regulatory T cells attenuates atherosclerosis. *J Mol Cell Cardiol*. 2020;145:99-111.
182. Ulrich BJ, Kharwadkar R, Chu M, et al. Allergic airway recall responses require IL-9 from resident memory CD4(+) T cells. *Sci Immunol*. 2022;7(69):eabg9296.
183. Angkasekwinai P, Dong C. IL-9-producing T cells: potential players in allergy and cancer. *Nat Rev Immunol*. 2021;21(1):37-48.
184. Zhang W, Tang T, Nie D, et al. IL-9 aggravates the development of atherosclerosis in ApoE^{-/-} mice. *Cardiovasc Res*. 2015;106(3):453-464.
185. Chen H, Gao F, Bao Y, et al. Blimp-1 inhibits Th9 cell differentiation and attenuates diabetic coronary heart disease. *Int Immunopharmacol*. 2021;95:107510.
186. Lin YZ, Wu BW, Lu ZD, et al. Circulating Th22 and Th9 levels in patients with acute coronary syndrome. *Mediators Inflamm*. 2013;2013:635672.
187. Gregersen I, Skjelland M, Holm S, et al. Increased systemic and local interleukin 9 levels in patients with carotid and coronary atherosclerosis. *PLoS One*. 2013;8(8):e72769.
188. Chang HC, Sehra S, Goswami R, et al. The transcription factor PU.1 is required for the development of IL-9-producing T cells and allergic inflammation. *Nat Immunol*. 2010;11(6):527-534.

189. Weber C, Meiler S, Doring Y, et al. CCL17-expressing dendritic cells drive atherosclerosis by restraining regulatory T cell homeostasis in mice. *J Clin Invest*. 2011;121(7):2898-2910.
190. Kimura S, Wang KY, Yamada S, et al. CCL22/macrophage-derived chemokine expression in apolipoprotein E-deficient mice and effects of histamine in the setting of atherosclerosis. *J Atheroscler Thromb*. 2015;22(6):599-609.
191. Wan W, Murphy PM. Regulation of atherogenesis by chemokine receptor CCR6. *Trends Cardiovasc Med*. 2011;21(5):140-144.
192. Wan W, Lim JK, Lionakis MS, et al. Genetic deletion of chemokine receptor Ccr6 decreases atherogenesis in ApoE-deficient mice. *Circ Res*. 2011;109(4):374-381.
193. Smith E, Prasad KM, Butcher M, et al. Blockade of interleukin-17A results in reduced atherosclerosis in apolipoprotein E-deficient mice. *Circulation*. 2010;121(15):1746-1755.
194. Danzaki K, Matsui Y, Ikesue M, et al. Interleukin-17A deficiency accelerates unstable atherosclerotic plaque formation in apolipoprotein E-deficient mice. *Arterioscler Thromb Vasc Biol*. 2012;32(2):273-280.
195. Madhur MS, Funt SA, Li L, et al. Role of interleukin 17 in inflammation, atherosclerosis, and vascular function in apolipoprotein e-deficient mice. *Arterioscler Thromb Vasc Biol*. 2011;31(7):1565-1572.
196. Butcher MJ, Gjurich BN, Phillips T, Galkina EV. The IL-17A/IL-17RA axis plays a proatherogenic role via the regulation of aortic myeloid cell recruitment. *Circ Res*. 2012;110(5):675-687.
197. Taleb S, Romain M, Ramkhelawon B, et al. Loss of SOCS3 expression in T cells reveals a regulatory role for interleukin-17 in atherosclerosis. *J Exp Med*. 2009;206(10):2067-2077.
198. Brauner S, Jiang X, Thorlacius GE, et al. Augmented Th17 differentiation in Trim21 deficiency promotes a stable phenotype of atherosclerotic plaques with high collagen content. *Cardiovasc Res*. 2018;114(1):158-167.
199. Irvin C, Zafar I, Good J, et al. Increased frequency of dual-positive TH2/TH17 cells in bronchoalveolar lavage fluid characterizes a population of patients with severe asthma. *J Allergy Clin Immunol*. 2014;134(5):1175-1186.e1177.
200. Liu CL, Zhang JY, Shi GP. Interaction between allergic asthma and atherosclerosis. *Transl Res*. 2016;174:5-22.
201. Gurgone D, McShane L, McSharry C, Guzik TJ, Maffia P. Cytokines at the interplay between asthma and atherosclerosis? *Front Pharmacol*. 2020;11:166.

SUPPORTING INFORMATION

Additional supporting information can be found online in the Supporting Information section at the end of this article.

How to cite this article: Fernández-Gallego N, Castillo-González R, Méndez-Barbero N, et al. The impact of type 2 immunity and allergic diseases in atherosclerosis. *Allergy*. 2022;77:3249-3266. doi: [10.1111/all.15426](https://doi.org/10.1111/all.15426)